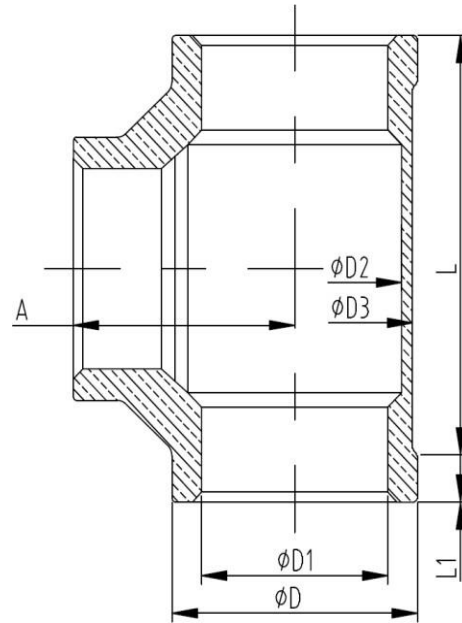


[Top](#)

不锈钢内螺纹三通 STAINLESS STEEL EQUAL TEE



MADE By CNC MACHINING FROM BAR AND PIPE

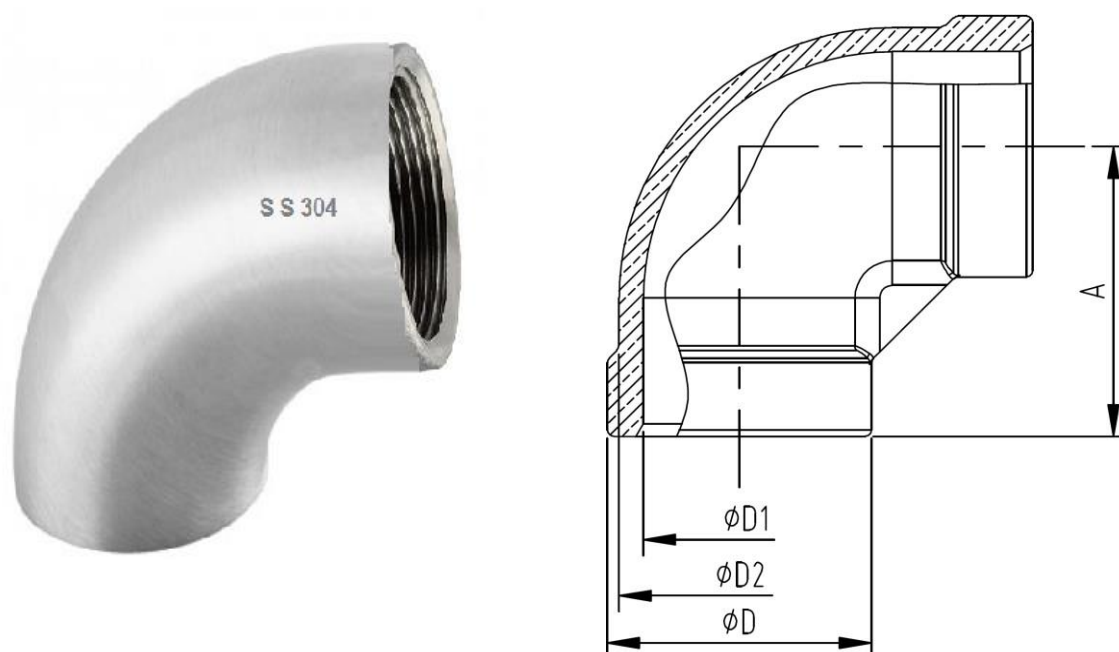
Dimension

Unit:mm

	1/8"	1/4"	3/8"	1/2"	3/4"	1"	1-1/4"	1-1/2"	2"	2-1/2"	3"	4"
A	17.15	18.85	21.5	26	30.4	35.2	43	47.75	57.25	68.8	78	95
D	14.7	18.3	21.8	26	46.2	39	49	55.5	67.5	85.1	99	125
D1	8.8	11.5	15.2	18	23.7	29.6	38.3	44.24	56	70	81	105
D2	8.8	11.5	15.2	21.8	27.2	34	42.5	48.5	61	76.5	89.5	114
D3	12.8	16.3	19.6	24.6	30.2	37.5	47	53.5	65.5	82.5	96	122
L	36	38	43.7	55	62.3	69	85.7	95.5	113.5	136	155	186
L1	5	5	4.5	5.5	6	8	9	10	10	12	14	16

[Top](#)

不锈钢内螺纹 90 度弯头 STAINLESS STEEL 90DEGREE ELBOW



MADE By CNC MACHINING FROM BAR AND PIPE

Dimension

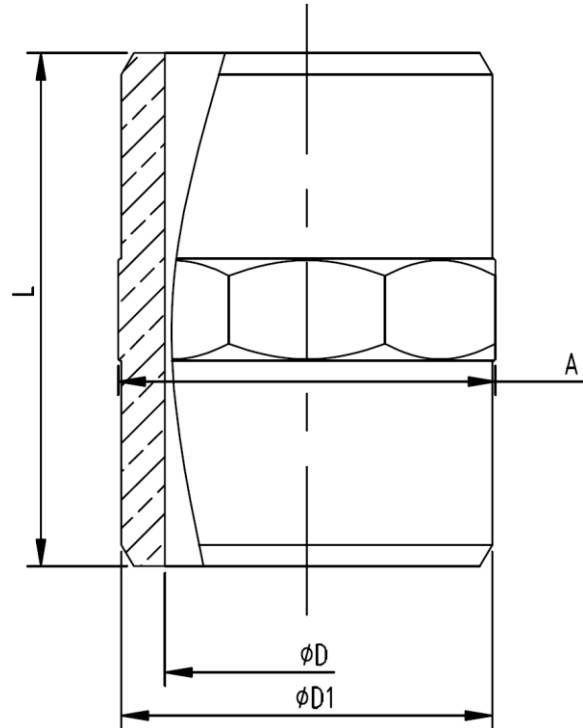
Unit:mm

	1/8"	1/4"	3/8"	1/2"	3/4"	1"	1-1/4"	1-1/2"	2"	2-1/2"	3"	4"
A	16.7	18.95	22.75	26.75	31	35	44	47	60	66	80	92
D	14.2	18	20.5	26.5	32	40	49.5	56.5	68	84	99	125
D1	8.9	11.5	14.9	18.1	23.9	29.7	38.3	44	55.5	70	80.5	105.5
D2	12.3	16	18.7	25	30	38	47.5	53.5	65	82	96	122

[Top](#)

不锈钢六角外丝

STAINLESS STEEL HEXAGON NIPPLE



MADE By CNC MACHINING FROM BAR AND PIPE

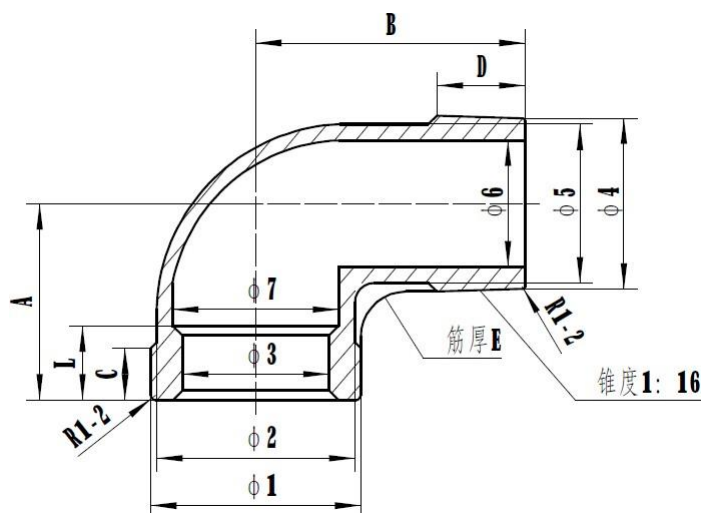
Dimension

Unit:mm

	1/8"	1/4"	3/8"	1/2"	3/4"	1"	1-1/4"	1-1/2"	2"	2-1/2"	3"	4"
A	12.8	15	18.8	22.5	28.1	35.2	44	50.8	62.5	78	92	118.2
L	28	32.3	37	40.5	44	47.8	50.9	51.8	61	75.5	90	86.3
D	5.5	8.2	11.7	15.5	20.8	26.5	35.5	40.8	53.2	64.6	80.12	105.5
D1	16.5	16.5	16.5	22	27.6	34.6	43.2	49.2	61.4	77.1	91.9	116.8
Hex No.	8	8	8	8	8	8	8	8	8	8	8	8

[Top](#)

不锈钢内外螺纹弯头 STAINLESS STEEL STREET ELBOW



MADE By CNC MACHINING FROM BAR AND PIPE

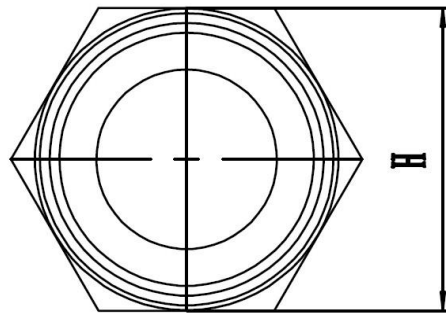
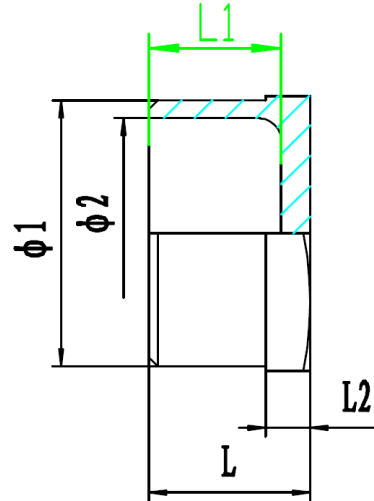
Dimension

Unit:mm

	1/8	1/4	3/8	1/2	3/4	1	1-1/4	1-1/2	2
Φ1	13.9	16.9	20.2	26.9	31.9	39.9	48.9	55.4	67.4
Φ2	12.2	14.9	18.4	24.9	29.9	37.9	46.4	52.9	64.9
Φ3	8	10.7	14.2	17.8	22.8	28.7	37.3	43.8	55.3
Φ4	10.2	13.5	17.2	21	26.6	33.6	42.4	48.4	60.3
Φ5	8	11.2	14.4	17.6	23	30.2	38.5	44.1	55.2
Φ6	4	7.2	10.2	14.4	19.7	26.5	34.4	39.7	50.7
Φ7				21.3	26.3	33.5	41.6	47.7	59.7
A	17	20	23	28	32	38	43	48	57
B	24	28	32	37	43	52	59	64	74
C	5.5	6.5	7	7	8	10	11	12	13
D	7	10	10	13	15	17	19	19	24
E	2.5	2.5	2.5	3	3	3	3.5	3.5	4
L				9.5	11.5	14	15	17	17
R	10	14	16	22	29	35	43	49	60

[Top](#)

不锈钢六角塞头 STAINLESS STEEL HEXAGON PLUG



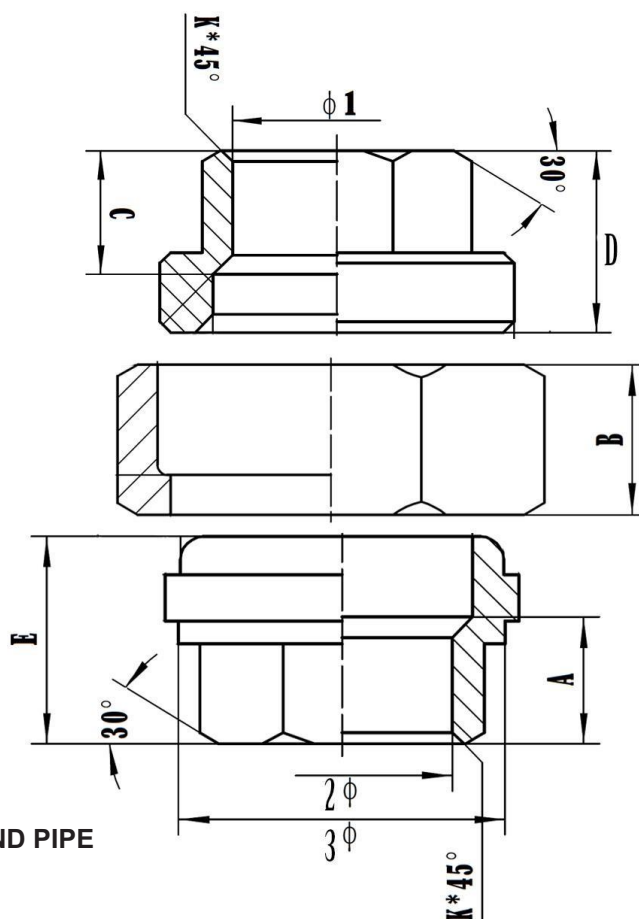
MADE By CNC MACHINING FROM BAR AND PIPE

Dimension

Unit:mm

	1/8	1/4	3/8	1/2	3/4	1	1-1/4	1-1/2	2
$\phi 1$	11	14.2	17.5	21.8	27.6	34.2	43	49	61
$\phi 2$		8.3	11.5	15	20.5	26.2	34.7	40.2	52
L	17	18	20	22	25	25.5	29	31	35
L1		16	18	20	22.5	23	26	28	31.5
L2	6	6	6	7	7	7.5	8	9	10
H	12	15	18	23	28	35	44	50	62

不锈钢由任活接头
STAINLESS STEEL UNION



MADE By CNC MACHINING FROM BAR AND PIPE

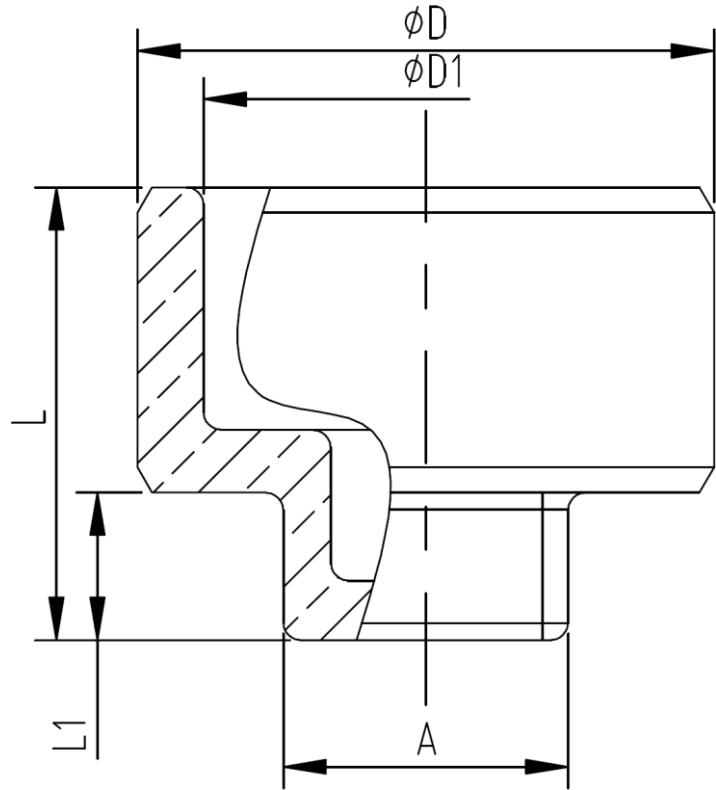
Dimension

Unit:mm

	1/8"	1/4"	3/8"	1/2"	3/4"	1"	1-1/4"	1-1/2"	2"	2-1/2"	3"	4"
A	11	11	17	21	26	34	43	49	61.5	73.5	89	120
B	11.5	12	14	16.5	17	18.5	22	24	26	28	30	32
C	8	9	11	13	14	15	18	18	20	22	23	32
D	16	16	17	19.5	21.5	25	28.5	29.5	32	38	41	49
E	17.5	17.5	20.5	26	31	33	36.5	40	43	45	51	55
1	13	14	20.5	24.5	31	39	48.5	54.5	67.5	80	98	125
3	19.3	19.3	23.5	28.6	35.3	43.8	52.8	61.6	74.8	88.8	103.8	134

[Top](#)

不锈钢四角塞头 STAINLESS STEEL SQUARE PLUG



MADE By CNC MACHINING FROM BAR AND PIPE

Dimension

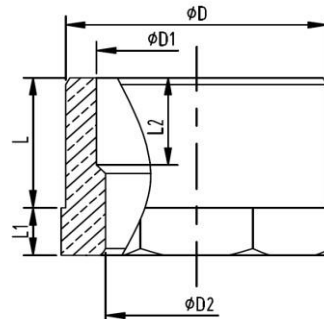
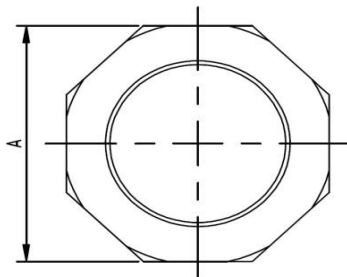
Unit:mm

	1/8"	1/4"	3/8"	1/2"	3/4"	1"	1-1/4"	1-1/2"	2"	2-1/2"	3"	4"
A	7.1	8.1	10	14	14.5	16.8	16.8	22	27.1	32	36	41
L	17.1	16	17	21	24.1	26.7	31	31	37.9	38.3	43.5	58.3
L1	7.9	6	7	7.8	8	8.7	12	12	12	11.5	13.5	22
D	10.5	14.2	17.3	21.8	27.5	34	43.1	49	61	76.7	91.2	116.3
D1	5.5	8.3	11	15.3	20	26.2	35.4	42.1	52.2	64.8	78	102.5
HEX No.	4	4	4	4	4	4	4	4	4	4	4	4

[Top](#)

不锈钢六角补心

STAINLESS STEEL HEXAGON BUSHING



MADE By CNC MACHINING FROM BAR AND PIPE

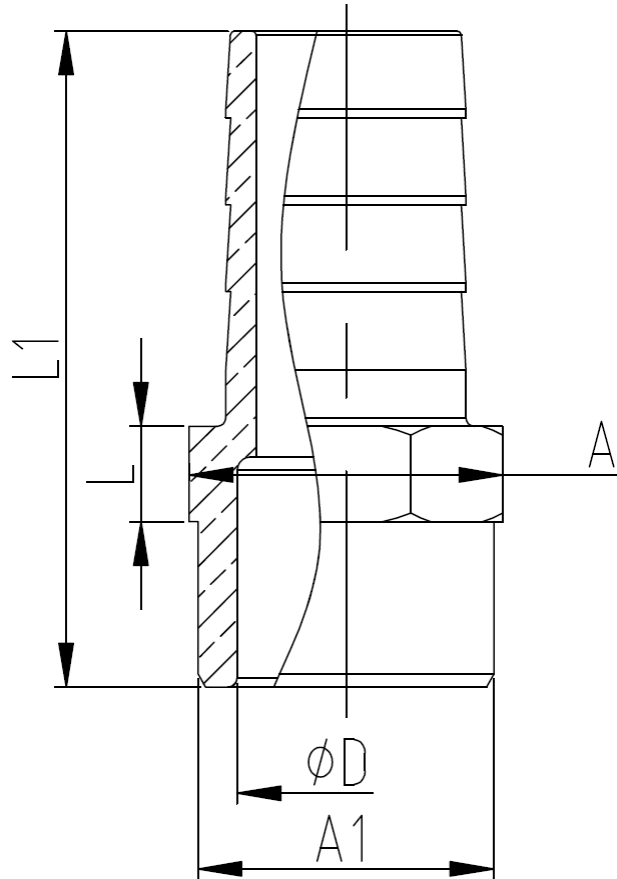
Dimension

Unit:mm

	A	D	D1	D2	L	L1	L2
3/8X1/8	19	17	11.6	8.8	11.9	6.1	8.3
1/2X1/4	23	21.6	15.5	11.5	14.9	6.5	12.7
3/4X1/4	27.8	27.1	20.7	11.5	18.3	7	17.1
3/4X3/8	27.8	27	20.4	14.5	18.4	7	16.2
3/4X1/2	27.9	27.4	20.6	18.4	18.4	7	16
1X1/4	34.9	34	26	11.5	18.6	7	16.7
1X3/8	35	34.1	26	14.5	18.9	7	16.9
1X1/2	34.9	34	26	18.3	18.8	7	13.5
1X3/4	35.2	34	26	23.6	18.9	6.9	12.7
1-1/4X1/4	43	42.3	34.6	11.15	21.6	7.7	25.4
1-1/4X1/2	43.9	43.1	34.5	18.25	20.9	8.1	17
1-1/4X1	43.9	43	34.5	29.6	20.6	8.3	14.2
1-1/2X1/4	49.1	48.4	40.4	11	22.1	8.35	26.7
1-1/2X3/8	49.15	48.5	40.3	14.6	22.1	8.1	25.1
1-1/2X1/2	49	48.4	40.2	18.1	22.2	8.2	25.2
1-1/2X1	50.4	49.1	40.2	29.5	21.7	8	14.8
1-1/2X1-1/4	50.4	49.1	40.2	38.6	21.7	8	13.5
2X1/4	61	60	51.7	11.1	26	8.1	29.5
2X3/8	61.1	60.1	51.6	14.7	29	8.3	28.5
2X1/2	61	60	51.7	18.15	26	8.3	28.7
2X3/4	61	60	51.7	23.4	28	8.1	28
2X1	61	60	51.7	29.2	26	8.3	25.8
2X1-1/4	61.9	61	51.4	38.4	26	9.2	18.3
2X1-1/2	62	61	51.5	44.5	25.5	9.2	18.2
2-1/2X1-1/4	79.3	76.7	63.4	37.7	28	11	22
2-1/2X1-1/2	79.3	76.7	63.4	43.2	28	11	21
2-1/2X2	79.3	76.7	63.4	55.2	28	11	18.8
3X1-1/2	91.4	90	78	44.3	32	12.4	18.7
3X2	91.2	90	77.7	56.5	32	12	20.7
3X2-1/2	91.4	90	77.3	65.2	32	12	22
4X2	117.1	116.5	103.6	55.5	37	13	30.2
4X2-1/2	117.4	116	103.3	64.5	37	13	27
4X3	117.5	116	104.1	80.8	37	37	26

[Top](#)

不锈钢皮管接头 STAINLESS STEEL HOSE NIPPLE



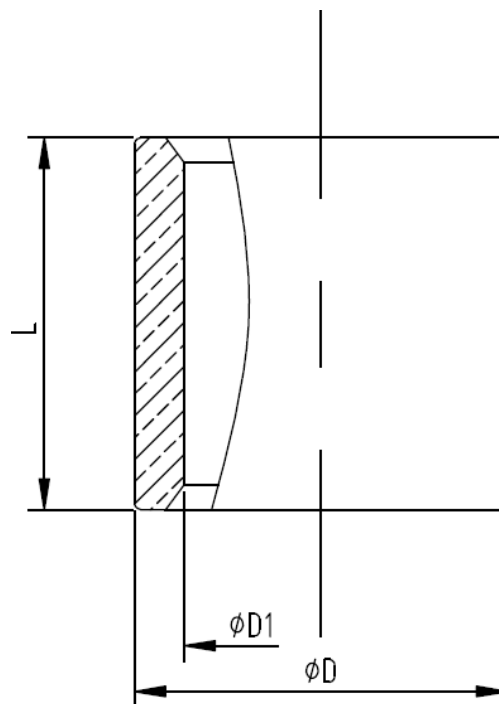
MADE By CNC MACHINING FROM BAR AND PIPE

Dimension

Unit:mm

	1/8"	1/4"	3/8"	1/2"	3/4"	1"	1-1/4"	1-1/2"	2"	2-1/2"	3"	4"
A	12	15	18.8	23	29	36	45	51	62.8	77.7	92.8	118.5
A1	11.1	13.4	17.1	21.3	27.4	34	43	49.1	61.1	77	92	116.7
D	5.5	8.6	11.2	13.7	19.5	24.6	33	39.1	51.4	64.7	78.8	103.6
L	6.2	6	7.2	8	9.3	11.1	12	12.5	13.5	10	12.3	12.4
L1	38	41.4	48	60.3	65.2	75	84.5	89.5	98.5	108.9	112.5	119.5

不锈钢光面接头
STAINLESS STEEL SOCKET



MADE By CNC MACHINING FROM BAR AND PIPE

Dimension

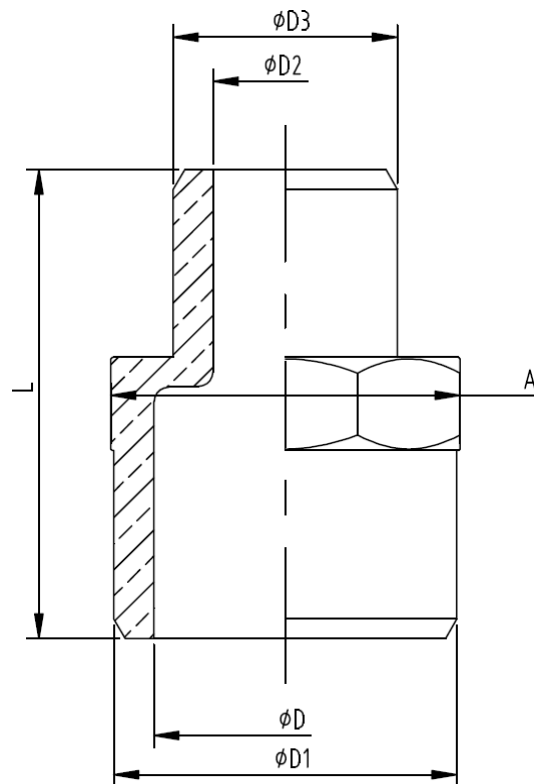
Unit:mm

	1/8"	1/4"	3/8"	1/2"	3/4"	1"	1-1/4"	1-1/2"	2"	2-1/2"	3"	4"
L	17	24	25.8	33.9	35.9	43	49	49	52.4	61.6	67.6	80
D	14.3	18	21.45	25.9	32.3	39.2	48.3	55	67.5	83	96.8	123.6
D1	8.8	11.5	14.9	18.4	23.6	29.5	38	43.8	55	68.7	80.1	107.2

[Top](#)

不锈钢异径六角外牙接头

STAINLESS STEEL REDUCING HEXAGON NIPLE



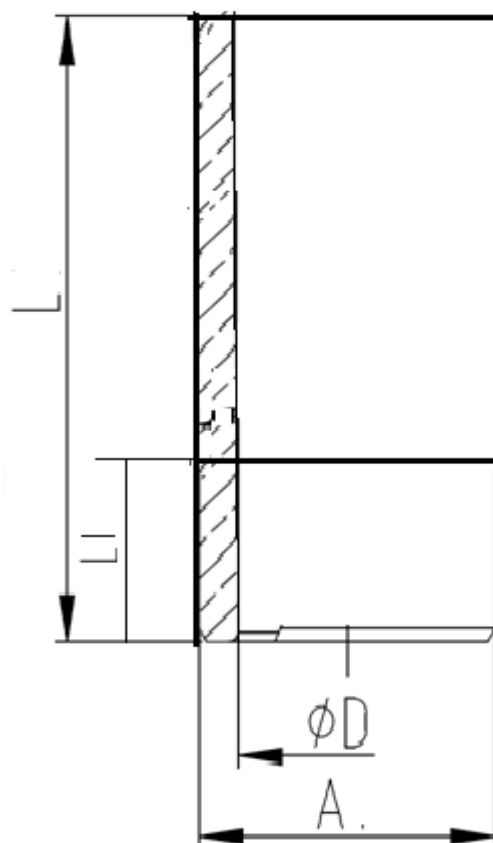
MADE By CNC MACHINING FROM BAR AND PIPE

Dimension

Unit:mm

	A	L	D	D1	D2	D3	HEX NO.
1/4X1/8	16	28.8	8.6	14	5.5	10.6	6
3/8X1/4	17	31.1	11.5	17.1	8.5	13.7	6
1/2X1/4	24	38	14.8	22.3	8.3	14.2	6
1/2X3/8	24	38.6	14.7	22	11	17.5	6
3/4X1/2	29	43.9	20	27.5	14.6	21.8	6
1X1/2	36	47	26.1	34.2	14.4	21.8	6
1X3/4	36	47.6	24.2	34.3	18.1	28.6	6
1-1/4X3/4	45.3	51	34.5	42.8	20	27.8	8
1-1/4X1	44.8	52	34.8	42.2	26.3	33.5	8
1-1/2X1	51.7	55.2	40.3	49	26.2	34.2	8
1-1/2X1-1/4	51	54.8	40.1	48	34.5	42.5	8
2X1-1/4	62.3	59.7	52.2	61.3	35.5	43	8
2X1-1/2	63.3	61	52	61	40.4	49.3	8

不锈钢异径六角外牙接头 STAINLESS STEEL PIPE NIPLE



MADE By CNC MACHINING FROM BAR AND PIPE

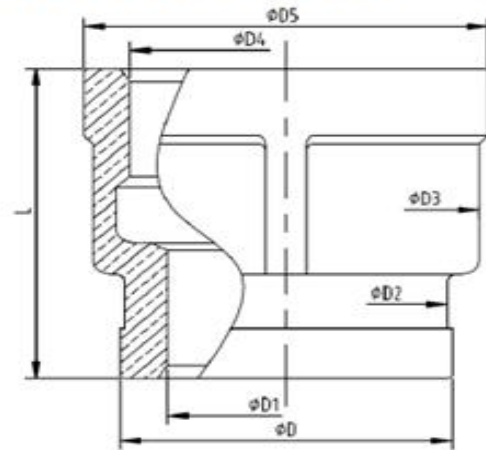
Dimension

Unit:mm

	1/8"	1/4"	3/8"	1/2"	3/4"	1"	1-1/4"	1-1/2"	2"	2-1/2"	3"	4"
A	8	16	20	22	27	34	41	48	60	72	85	110
D	5	12	14	16	21	28	34	42	53	66	77	100
L1	10	10	10	15	20	20	25	30	35	40	40	45
L	10	10	10	10	10	10	10	10	10	10	10	10

[Top](#)

不锈钢异径管箍 STAINLESS STEEL REDUCING SOCKET



MADE By CNC MACHINING FROM BAR AND PIPE

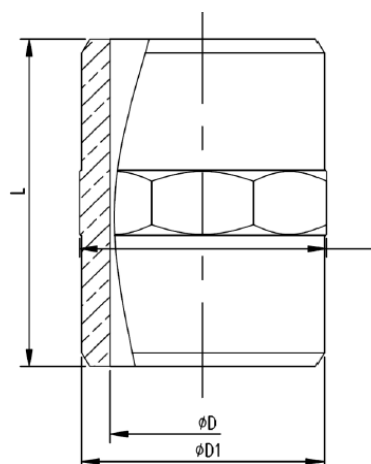
Dimension

Unit:mm

	L	D	D1	D2	D3	D4	D5
1/4X1/8	26	14.8	8.7	12.85	18	11.5	21
3/8X1/4	30.3	17.6	11.5	15.7	22	14.5	24.2
1/2X1/8	31.8	14.8	8.6	12.8	24.7	18.1	27
1/2X1/4	33	17.5	11	15.6	16.6	18	17.7
1/2X3/8	34.4	20.8	14.8	19	25.5	18	27.7
3/4X3/8	36.6	21	14.2	19.2	30.6	23.6	32.7
3/4X1/2	39	28	18.3	24.8	31.4	23.4	34.4
1X3/8	39	20.8	15	19	38.4	29.3	40.7
1X1/2	40.7	28	18.4	25	39	19	43
1X3/4	42	32	23.2	30	37.6	29.5	40
1-1/4X1/2	43	27.5	17.6	26.6	47.2	38	50
1-1/4X1	46	40.8	28.6	38.6	47.3	38	50
1-1/2X1/2	45	27.4	17.8	15.5	65.5	55	68.3
1-1/2X3/4	46.4	32.6	22.6	30.4	54	43.8	56.5
1-1/2X1	52	39.7	28.5	38	53	44	55.9
1-1/2X1-1/4	49.2	49.8	37.4	47.2	54	44	56.5
2X1/2	45	27.3	17.5	15.5	65.5	55	68.3
2X3/4	46	32.4	22.6	30.3	65.7	55	68.1
2X1	58	40	28.7	38.3	65.7	56	68.4
2X1-1/4	49.5	49.7	37	47	66	55.6	69
2X1-1/2	50	56	43.6	53.6	65.7	55	68.6
2-1/2X1-1/2	56	55	44	52.7	81	70	83.4
2-1/2X2	54.6	67.7	55	65	80	70	83.3
3X1-1/2	55	56	44.8	53.6	95	82	98.5
3X2	61	69	55	66.5	93.6	80	97
3X2-1/2	67.6	84	70	82	96	81	99
4X3	73	100	83.5	98	123	108	125

[Top](#)

不锈钢六角外丝 STAINLESS STEEL WELDING NIPPLE



MADE By CNC MACHINING FROM BAR AND PIPE

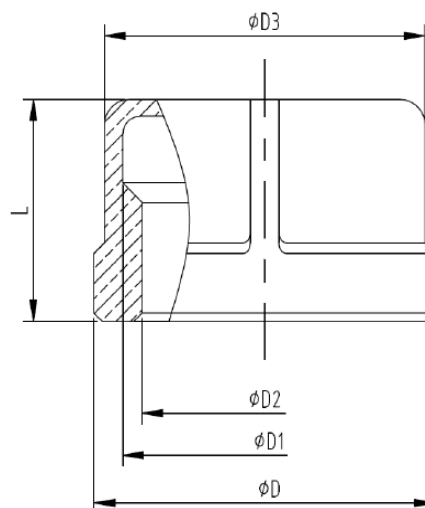
Dimension

Unit:mm

	1/8"	1/4"	3/8"	1/2"	3/4"	1"	1-1/4"	1-1/2"	2"	2-1/2"	3"	4"
A	12.8	15	18.8	22.5	28.1	35.2	44	50.8	62.5	78	92	118.2
L	28	32.3	37	40.5	44	47.8	50.9	51.8	61	75.5	90	86.3
D	5.5	8.2	11.7	15.5	20.8	26.5	35.5	40.8	53.2	64.6	80.12	105.5
D1	16.5	16.5	16.5	22	27.6	34.6	43.2	49.2	61.4	77.1	91.9	116.8
Hex No.	8	8	8	8	8	8	8	8	8	8	8	8

[Top](#)

不锈钢圆管帽 STAINLESS STEEL HEX CAP



MADE By CNC MACHINING FROM BAR AND PIPE

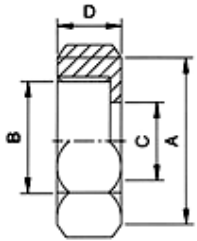
Dimension

Unit:mm

	1/8"	1/4"	3/8"	1/2"	3/4"	1"	1-1/4"	1-1/2"	2"	2-1/2"	3"	4"
L	16	15	16	20	22.3	26.1	27.7	31.5	34.5	39	43	45
D	14.5	17.5	20.7	28.5	32.7	41	49.7	56.1	68.3	85	98.3	125
D1	0	0	0	21.8	26.9	34.1	42.2	48	59.5	75.7	88	113.4
D2	8.7	11.5	14.5	18.9	24.1	29.5	37.6	43.9	55.5	69.7	80	105.6
D3	12.8	17.5	18.9	25.7	30.7	38.5	47.4	53.5	65.3	82	95.8	121.5

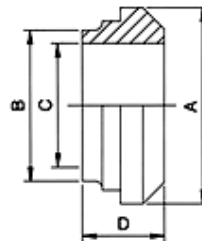
3A Unions

13H Hex. Nut



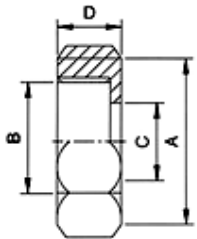
SIZE	A	B	C	D
1"	46.0	38.0	30.3	23.0
1-1/2"	61.1	51.5	43.4	24.6
2"	76.2	65.0	56.5	27.0
2-1/2"	91.3	78.6	69.6	29.6
3"	106.4	92.1	92.7	32.5
4"	137.6	120.1	122.1	38.1

14PRF Short Bevel Seat Weld Liner



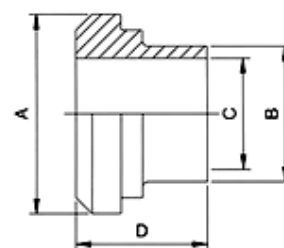
SIZE	A	B	C	D
1"	33.3	25.4	22.1	18.3
1-1/2"	46.8	38.1	34.8	18.3
2"	60.3	50.8	47.5	19.1
2-1/2"	73.8	63.5	60.2	22.3
3"	87.3	76.2	72.9	23.1
4"	114.3	101.6	97.4	26.2

15TRF Short Bevel Seat Weld Male



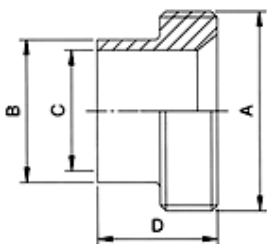
SIZE	A	B	C	D
1"	37.1	25.4	22.1	18.3
1-1/2"	50.6	38.1	34.8	18.3
2"	64.2	50.8	47.5	19.1
2-1/2"	77.7	63.5	60.2	22.3
3"	91.2	76.2	72.9	23.1
4"	119.3	101.6	97.4	26.2

14A Long Weld Liner



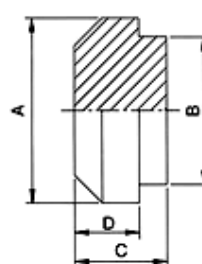
SIZE	A	B	C	D
1"	33.3	25.4	22.1	34.9
1-1/2"	46.8	38.1	34.8	38.1
2"	60.3	50.8	47.5	38.1
2-1/2"	73.8	63.5	60.2	44.5
3"	87.3	76.2	72.9	44.5
4"	114.3	101.6	97.4	44.5

15A Long Weld Male



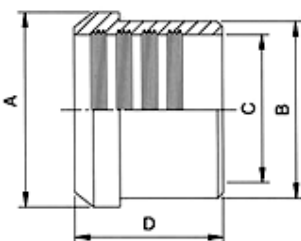
SIZE	A	B	C	D
1"	37.1	25.4	22.1	34.9
1-1/2"	50.6	38.1	34.8	38.1
2"	64.2	50.8	47.5	38.1
2-1/2"	77.7	63.5	60.2	44.5
3"	91.2	76.2	72.9	44.5
4"	119.3	101.6	97.4	44.5

16A Solid End Cap



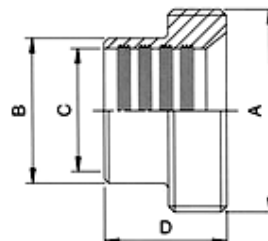
SIZE	A	B	C	D
1"	33.3	29.5	11.9	8.0
1-1/2"	46.8	42.6	14.3	8.7
2"	60.3	55.7	15.9	10.3
2-1/2"	73.8	68.8	16.7	11.1
3"	87.3	81.9	18.3	11.9
4"	114.3	108.1	20.7	13.5

14R Expanding Liner



SIZE	A	B	C	D
1"	33.3	29.5	25.5	19.1
1-1/2"	46.8	42.6	38.2	28.6
2"	60.3	55.7	50.9	33.3
2-1/2"	73.8	68.8	63.6	34.9
3"	87.3	81.9	76.3	36.5
4"	114.3	108.1	101.7	38.1

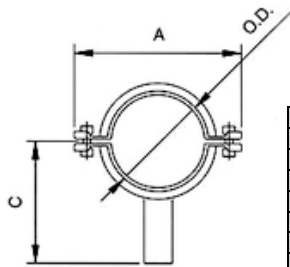
15R Expanding Liner



SIZE	A	B	C	D
1"	37.1	29.5	25.5	20.6
1-1/2"	50.6	42.6	38.2	28.6
2"	64.2	55.7	50.9	34.9
2-1/2"	77.7	68.8	63.6	38.1
3"	91.2	81.9	76.3	41.3
4"	119.3	108.1	101.7	41.3

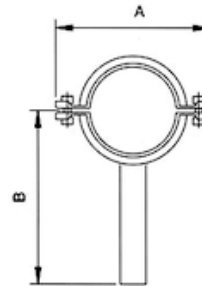
Tube Hangers

THRS Tube Hanger Short Type



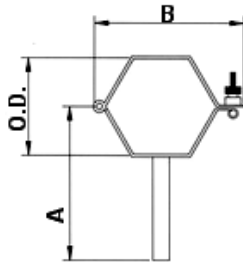
SIZE	O.D.	A	B	C
1"	25.4	78.0	150.0	90.0
1-1/4"	31.8	85.0	150.0	90.0
1-1/2"	38.1	91.0	150.0	90.0
2"	50.8	104.0	150.0	90.0
2-1/2"	63.5	116.0	150.0	90.0
3"	76.2	129.0	150.0	90.0
4"	101.6	155.0	150.0	90.0

THRL Tube Hanger Long Type



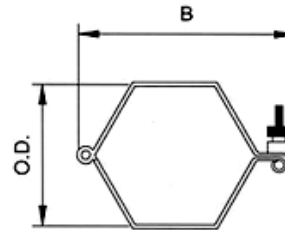
SIZE	O.D.	A	B	C
1"	25.4	78.0	150.0	90.0
1-1/4"	31.8	85.0	150.0	90.0
1-1/2"	38.1	91.0	150.0	90.0
2"	50.8	104.0	150.0	90.0
2-1/2"	63.5	116.0	150.0	90.0
3"	76.2	129.0	150.0	90.0
4"	101.6	155.0	150.0	90.0

THHP Tube Hanger With Pipe



SIZE	O.D.	A	B
1"	25.4	100.0	55.4
1-1/2"	38.1	100.0	68.1
2"	50.8	100.0	80.8
2-1/2"	63.5	100.0	93.5
3"	76.2	100.0	106.2
4"	101.6	100.0	131.6

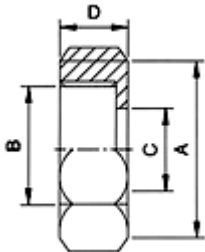
THHP Tube Hanger Without Pipe



SIZE	O.D.	A	B
1"	25.4	100.0	55.4
1-1/2"	38.1	100.0	68.1
2"	50.8	100.0	80.8
2-1/2"	63.5	100.0	93.5
3"	76.2	100.0	106.2
4"	101.6	100.0	131.6

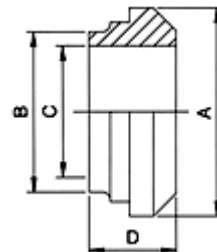
3A Unions

13H Hex. Nut



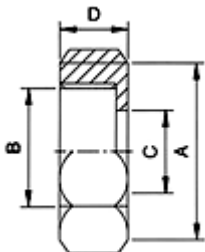
SIZE	A	B	C	D
1"	46.0	38.0	30.3	23.0
1-1/2"	61.1	51.5	43.4	24.6
2"	76.2	65.0	56.5	27.0
2-1/2"	91.3	78.6	69.6	29.6
3"	106.4	92.1	82.7	32.5
4"	137.6	120.1	102.1	38.1

14PRF Short Bevel Seat Weld Liner



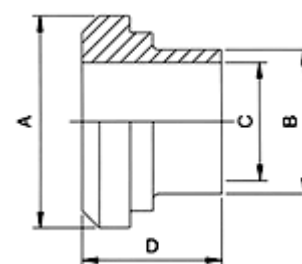
SIZE	A	B	C	D
1"	33.3	25.4	22.1	18.3
1-1/2"	46.8	38.1	34.8	18.3
2"	60.3	50.8	47.5	19.1
2-1/2"	73.8	63.5	60.2	22.3
3"	87.3	76.2	72.9	23.1
4"	114.3	101.6	97.4	26.2

15TRF Short Bevel Seat Weld Male



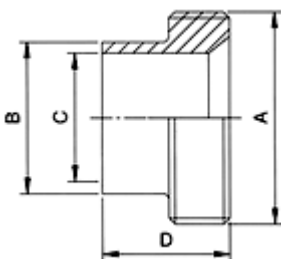
SIZE	A	B	C	D
1"	37.1	25.4	22.1	18.3
1-1/2"	50.6	38.1	34.8	18.3
2"	64.2	50.8	47.5	19.1
2-1/2"	77.7	63.5	60.2	22.3
3"	91.2	76.2	72.9	23.1
4"	119.3	101.6	97.4	26.2

14A Long Weld Liner



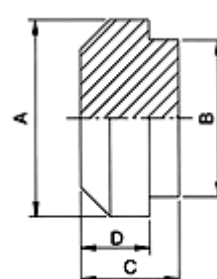
SIZE	A	B	C	D
1"	33.3	25.4	22.1	34.9
1-1/2"	46.8	38.1	34.8	38.1
2"	60.3	50.8	47.5	38.1
2-1/2"	73.8	63.5	60.2	44.5
3"	87.3	76.2	72.9	44.5
4"	114.3	101.6	97.4	44.5

15A Long Weld Male



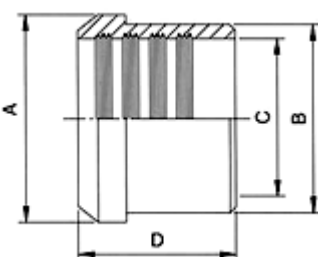
SIZE	A	B	C	D
1"	37.1	25.4	22.1	34.9
1-1/2"	50.6	38.1	34.8	38.1
2"	64.2	50.8	47.5	38.1
2-1/2"	77.7	63.5	60.2	44.5
3"	91.2	76.2	72.9	44.5
4"	119.3	101.6	97.4	44.5

16A Solid End Cap



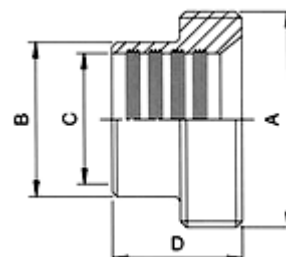
SIZE	A	B	C	D
1"	33.3	29.5	11.9	8.0
1-1/2"	46.8	42.6	14.3	8.7
2"	60.3	55.7	15.9	10.3
2-1/2"	73.8	68.8	16.7	11.1
3"	87.3	81.9	18.3	11.9
4"	114.3	108.1	20.7	13.5

14R Expanding Liner



SIZE	A	B	C	D
1"	33.3	29.5	25.5	19.1
1-1/2"	46.8	42.6	38.2	28.6
2"	60.3	55.7	50.9	33.3
2-1/2"	73.8	68.8	63.6	34.9
3"	87.3	81.9	76.3	36.5
4"	114.3	108.1	101.7	38.1

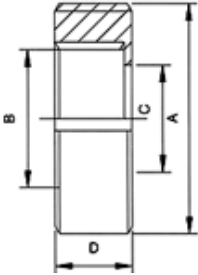
15R Expanding Liner



SIZE	A	B	C	D
1"	37.1	29.5	25.5	20.6
1-1/2"	50.6	42.6	38.2	28.6
2"	64.2	55.7	50.9	34.9
2-1/2"	77.7	68.8	63.6	38.1
3"	91.2	81.9	76.3	41.3
4"	119.3	108.1	101.7	41.3

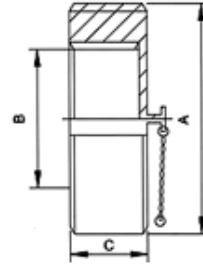
DIN Unions

DIN-13R(DIN-11851) Round Nut 4 Slots



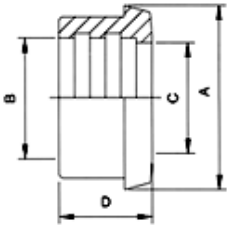
SIZE	A	B	C	D
10	38.0	25.1	19.0	18.0
15	44.0	31.1	25.0	18.0
20	54.0	40.2	31.0	21.0
25	63.0	48.2	36.0	21.0
32	70.0	54.2	42.0	21.0
40	78.0	61.2	49.0	21.0
50	92.0	74.2	62.0	22.0
65	112.0	91.2	80.0	25.0
80	127.0	104.3	94.0	29.0
100	148.0	124.3	115.0	31.0
125	178.0	154.3	138.0	35.0
150	210.0	184.3	164.0	40.0

DIN-13RBN(DIN-11851) Round Blank Nut



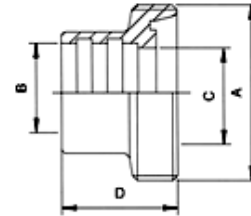
SIZE	A	B	C
10	38.0	25.1	18.0
15	44.0	31.1	18.0
20	54.0	40.2	21.0
25	63.0	48.2	21.0
32	70.0	54.2	21.0
40	78.0	61.2	21.0
50	92.0	74.2	22.0
65	112.0	91.2	25.0
80	127.0	104.3	29.0
100	148.0	124.3	31.0
125	178.0	154.3	35.0
150	210.0	184.3	40.0

DIN-14R(DIN-11851) Expanding Liner



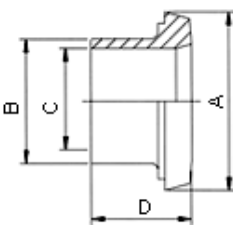
SIZE	A	B	C	D
10	22.0	12.2	10.0	17.0
15	28.0	18.2	16.0	17.0
20	36.0	22.2	20.0	18.0
25	44.0	28.2	26.0	22.0
32	50.0	34.2	32.0	25.0
40	56.0	40.2	38.0	26.0
50	68.0	52.2	50.0	28.0
65	86.0	70.3	66.0	32.0
80	100.0	85.3	81.0	37.0
100	120.0	104.3	100.0	44.0
125	149.0	129.3	125.0	34.0
150	175.0	154.3	150.0	37.0

DIN-15R(DIN-11851) Expanding Male



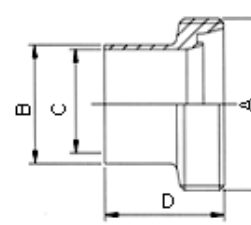
SIZE	A	B	C	D
10	28.0	12.2	10.0	21.0
15	34.0	18.2	16.0	21.0
20	44.0	22.2	20.0	24.0
25	52.0	28.2	26.0	29.0
32	58.0	34.2	32.0	32.0
40	65.0	40.2	38.0	33.0
50	78.0	52.2	50.0	35.0
65	95.0	70.3	66.0	40.0
80	110.0	85.3	81.0	45.0
100	130.0	104.3	100.0	54.0
125	160.0	129.3	125.0	46.0
150	190.0	154.3	150.0	50.0

DIN-14(DIN-11851) Welding Liner



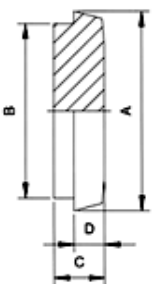
SIZE	A	B	C	D
10	22.0	15.0	12.0	17.0
15	28.0	21.0	18.0	17.0
20	36.0	25.0	22.0	18.0
25	44.0	31.0	28.0	22.0
32	50.0	37.0	34.0	25.0
40	56.0	43.0	40.0	26.0
50	68.5	55.0	52.0	28.0
65	86.0	72.0	68.0	32.0
80	100.0	87.0	83.0	37.0
100	121.0	106.0	102.0	44.0
125	150.0	132.0	127.0	34.0
150	176.0	157.0	152.0	37.0

DIN-15(DIN-11851) Welding Male



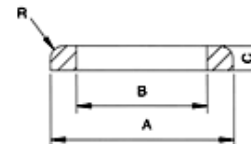
SIZE	A	B	C	D
10	28.0	15.0	12.0	21.0
15	34.0	21.0	18.0	21.0
20	44.0	25.0	22.0	24.0
25	52.0	31.0	28.0	29.0
32	58.0	37.0	34.0	32.0
40	65.0	43.0	40.0	33.0
50	78.0	55.0	52.0	35.0
65	95.0	72.0	68.0	40.0
80	110.0	87.0	83.0	45.0
100	130.0	106.0	102.0	54.0
125	160.0	132.0	127.0	46.0
150	190.0	157.0	152.0	50.0

DIN-16(DIN-11851) Blank



SIZE	A	B	C	D
10	22.0	18.0	9.0	6.0
15	28.0	24.0	9.0	6.0
20	36.0	30.0	11.0	8.0
25	44.0	35.0	13.0	10.0
32	50.0	41.0	13.0	10.0
40	56.0	48.0	13.0	10.0
50	68.5	61.0	14.0	11.0
65	86.0	79.0	16.0	12.0
80	100.0	93.0	16.0	12.0
100	121.0	114.0	20.0	15.0
125	150.0	137.0	22.0	17.0
150	176.0	163.0	24.0	18.0

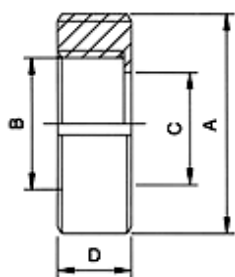
Seal For DIN Union



SIZE	A	B	C	R
10	20.0	12.0	4.5	2.3
15	26.0	18.0	4.5	2.3
20	33.0	23.0	4.5	2.8
25	40.0	30.0	5.0	2.8
32	46.0	36.0	5.0	2.8
40	52.0	42.0	5.0	2.8
50	64.0	54.0	5.0	2.8
65	81.0	71.0	5.0	2.8
80	95.0	85.0	5.0	2.8
100	114.0	104.0	6.0	2.8
125	142.0	130.0	7.0	3.5
150	167.0	155.0	7.0	3.5

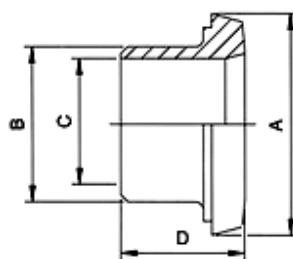
DIN (Imperial) Unions

DIN-13RI(DIN-11851) Round Nut 4 Slots



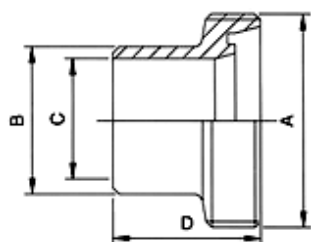
SIZE	A	B	C	D
1"	63.0	48.2	36.0	21.0
1-1/2"	78.0	61.2	49.0	21.0
2"	92.0	74.2	62.0	22.0
2-1/2"	112.0	91.2	80.0	25.0
3"	127.0	104.3	94.0	29.0
4"	148.0	124.3	115.0	31.0

DIN-14I(DIN-11851) Imperial Welding Liner



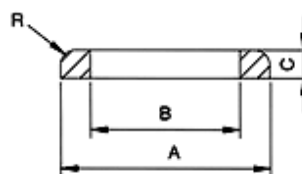
SIZE	A	B	C	D
1"	44.0	25.4	22.1	22.0
1-1/2"	56.0	38.1	34.8	26.0
2"	68.0	50.8	47.5	28.0
2-1/2"	86.0	63.5	60.2	32.0
3"	100.0	76.2	72.9	37.0
4"	121.0	101.6	97.6	44.0

DIN-15I(DIN-11851) Imperial Welding Male



SIZE	A	B	C	D
1"	52.0	25.4	22.1	29.0
1-1/2"	65.0	38.1	34.8	33.0
2"	78.0	50.8	47.5	35.0
2-1/2"	95.0	63.5	60.2	40.0
3"	110.0	76.2	72.9	45.0
4"	130.0	101.6	97.6	54.0

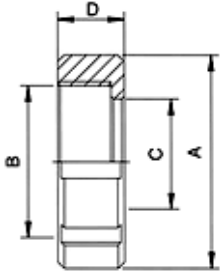
Seal For DIN Union



SIZE	A	B	C	D
1"	40.0	30.0	5.0	2.8
1-1/2"	52.0	42.0	5.0	2.8
2"	64.0	54.0	5.0	2.8
2-1/2"	81.0	71.0	5.0	2.8
3"	95.0	85.0	5.0	2.8
4"	114.0	104.0	6.0	2.8

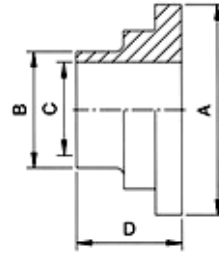
SMS Unions

SMS-13R(FR) Round Nut 6 Slots



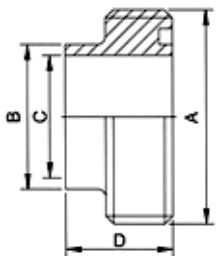
SIZE	A	B	C	D
25.0	51.0	RD 40 x 1/6	32.3	19.0
32.0	60.0	RD 48 x 1/6	40.3	22.0
38.0	74.0	RD 60 x 1/6	48.3	23.0
51.0	84.0	RD 70 x 1/6	61.0	24.0
63.5	100.0	RD 85 x 1/6	74.0	28.0
76.1	114.0	RD 98 x 1/6	87.0	30.0
101.6	138.0	RD 132 x 1/6	113.0	31.0
104.0	138.0	RD 125 x 1/4	113.0	31.0

SMS-14(FR) Welding Liner



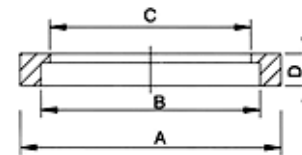
SIZE	A	B	C	D
25.0	35.5	25.0	22.5	15.5
38.0	55.0	38.0	35.5	16.0
51.0	65.0	51.0	48.5	17.0
63.5	80.0	63.5	60.5	17.0
76.1	93.0	76.1	72.9	19.0
104.0	118.0	104.0	100.0	19.0

SMS-15(FR) Welding Male



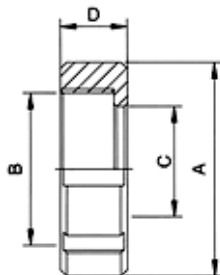
SIZE	A	B	C	D
25.0	RD 40 x 1/6	25.0	22.5	19.0
38.0	RD 60 x 1/6	38.0	35.5	23.0
51.0	RD 70 x 1/6	51.0	48.5	23.0
63.5	RD 85 x 1/6	63.5	60.5	27.0
76.1	RD 98 x 1/6	76.1	72.9	27.0
104.0	RD 125 x 1/4	104.0	100.0	30.0

Seal For SMS(FR) Union



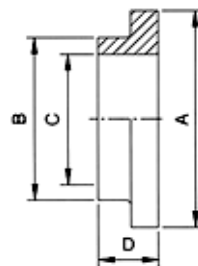
SIZE	A	B	C	D
25.0	31.8	25.1	22.8	5.3
38.0	47.8	38.1	35.8	5.3
51.0	60.8	51.1	48.8	5.3
63.5	73.3	63.6	61.0	5.3
76.1	85.8	76.1	73.4	5.3
104.0	115.7	104.0	100.5	5.3

SMS-13R(SE) Round Nut 6 Slots



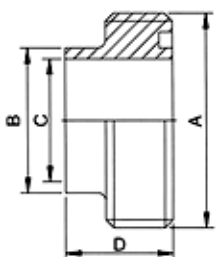
SIZE	A	B	C	D
25.0	51.0	RD 40 x 1/6	32.0	20.0
38.0	74.0	RD 60 x 1/6	48.0	25.0
51.0	84.0	RD 70 x 1/6	60.6	26.0
63.5	100.0	RD 85 x 1/6	74.0	30.0
76.1	114.0	RD 98 x 1/6	87.0	32.0
101.6	138.0	RD 132 x 1/4	117.0	45.0

SMS-14(SE) Welding Liner



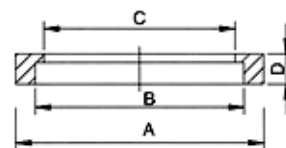
SIZE	A	B	C	D
25.0	35.5	25.0	22.5	8.0
38.0	55.0	38.0	35.5	9.0
51.0	65.0	51.0	48.5	9.0
63.5	80.0	63.5	60.2	9.0
76.1	93.0	76.1	72.8	10.0
101.6	126.8	101.6	97.6	12.0

SMS-15(SE) Welding Male



SIZE	A	B	C	D
25.0	RD 40 x 1/6	25.0	22.5	15.0
38.0	RD 60 x 1/6	38.0	35.5	20.0
51.0	RD 70 x 1/6	51.0	48.5	20.0
63.5	RD 85 x 1/6	63.5	60.2	24.0
76.1	RD 98 x 1/6	76.1	72.8	24.0
101.6	RD 132 x 1/4	101.6	97.6	35.0

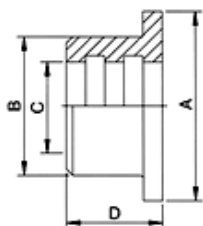
Seal For SMS(SE) Union



SIZE	A	B	C	D
25.0	31.8	25.1	22.8	5.3
38.0	47.8	38.1	35.8	5.3
51.0	60.8	51.1	48.8	5.3
63.5	73.3	63.6	61.0	5.3
76.1	85.8	76.1	73.4	5.3
101.6	113.8	101.6	98.2	5.3

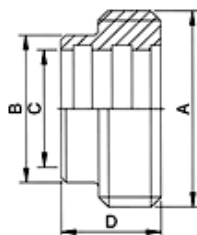
SMS Unions

SMS-14R Expanding Liner



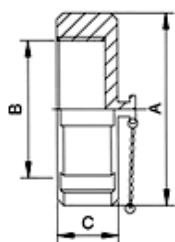
SIZE	A	B	C	D
25.0	35.5	32.0	25.1	17.0
38.0	55.0	48.0	38.1	20.0
51.0	65.0	60.5	51.1	20.0
63.5	80.0	73.5	63.6	25.0
76.1	93.0	86.5	76.3	30.0
104.0	118.0	112.5	104.2	27.0

SMS-15R Expanding Male



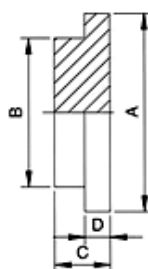
SIZE	A	B	C	D
25.0	RD 40 x 1/6	32.0	25.1	20.0
38.0	RD 60 x 1/6	48.0	38.1	23.0
51.0	RD 70 x 1/6	60.5	51.1	25.0
63.5	RD 85 x 1/6	73.5	63.6	30.0
76.1	RD 98 x 1/6	86.5	76.3	35.0
104.0	RD 125 x 1/4	112.5	104.2	30.0

SMS-13RBN Blank Nut



SIZE	A	B	C
25.0	51.0	RD 40 x 1/6	19.0
38.0	74.0	RD 60 x 1/4	23.0
51.0	84.0	RD 70 x 1/6	24.0
63.5	100.0	RD 85 x 1/6	28.0
76.1	114.0	RD 98 x 1/6	30.0
104.0	138.0	RD 125 x 1/4	31.0

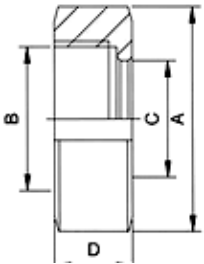
SMS-16 Blank Liner



SIZE	A	B	C	D
25.0	35.5	32.0	7.5	3.5
38.0	55.0	48.0	8.0	4.0
51.0	65.0	60.5	9.0	4.0
63.5	80.0	73.5	9.0	4.0
76.1	93.0	86.0	11.0	5.0
104.0	118.0	112.0	12.0	6.0

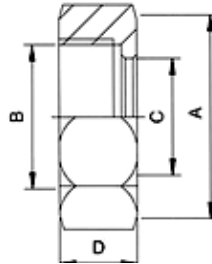
RJT Unions

RJT-13R Round Nut 6 Slots



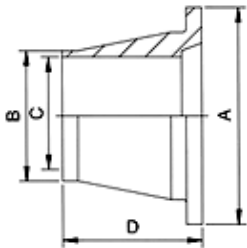
SIZE	A	B	C	D
1"	58.5	43.1	33.3	22.2
1-1/2"	74.0	55.8	46.0	22.2
2"	85.5	68.7	58.7	22.2
2-1/2"	98.5	81.4	71.4	22.2
3"	111.6	94.1	84.1	22.2
4"	138.0	119.5	109.5	22.2
6"	197.0	169.5	163.0	22.2

RJT-13H Hex. Nut



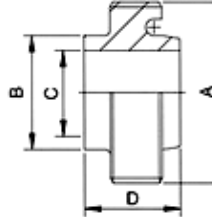
SIZE	A	B	C	D
1"	50.8	43.1	33.3	22.2
1-1/2"	65.0	55.8	46.0	22.2
2"	79.4	68.7	58.7	22.2
2-1/2"	92.1	81.4	71.4	22.2
3"	104.8	94.1	84.1	22.2
4"	130.2	119.5	109.5	22.2
6"	181.0	169.5	163.0	22.2

RJT-14 Welding Liner



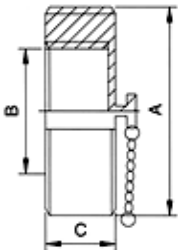
SIZE	A	B	C	D
1"	41.3	25.4	22.2	19.0
1-1/2"	54.0	38.1	34.9	19.0
2"	66.7	50.8	47.6	19.0
2-1/2"	79.4	63.5	60.3	19.0
3"	92.1	76.2	73.0	19.0
4"	117.5	101.6	97.6	19.0
6"	168.3	152.4	148.2	23.5

RJT-15 Welding Male



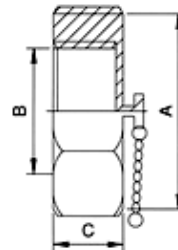
SIZE	A	B	C	D
1"	45.7	25.4	22.2	26.3
1-1/2"	58.4	38.1	34.9	26.3
2"	72.7	50.8	47.6	26.3
2-1/2"	85.4	63.5	60.3	26.3
3"	98.1	76.2	73.0	26.3
4"	123.5	101.6	97.6	26.3
6"	174.3	152.4	148.2	26.3

RJT-13RBN Round Blank Nut



SIZE	A	B	C
1"	58.5	43.1	22.2
1-1/2"	74.0	55.8	22.2
2"	85.5	68.7	22.2
2-1/2"	98.5	81.4	22.2
3"	111.6	94.1	22.2
4"	138.0	119.5	22.2

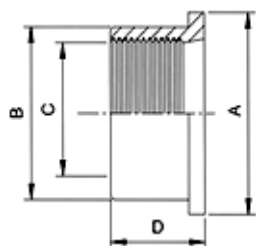
RJT-13HBN Hex. Blank Nut



SIZE	A	B	C
1"	50.8	43.1	22.2
1-1/2"	65.0	55.8	22.2
2"	79.4	68.7	22.2
2-1/2"	92.1	81.4	22.2
3"	104.8	94.1	22.2
4"	130.2	119.5	22.2

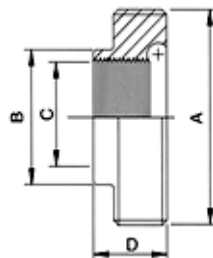
RJT Unions

RJT-14R Expanding Liner



SIZE	A	B	C	D
1"	41.3	32.5	25.5	20.0
1-1/2"	54.0	45.2	38.2	24.0
2"	66.7	57.9	50.9	28.0
2-1/2"	79.4	70.6	63.6	32.0
3"	92.1	83.8	76.4	32.0
4"	117.5	109.0	101.8	32.0

RJT-15R Expanding Male



SIZE	A	B	C	D
1"	45.7	32.5	25.5	20.0
1-1/2"	58.4	45.2	38.2	24.0
2"	72.7	57.9	50.9	28.0
2-1/2"	85.4	70.6	63.6	32.0
3"	98.1	83.8	76.4	32.0
4"	128.7	109.0	101.8	32.0

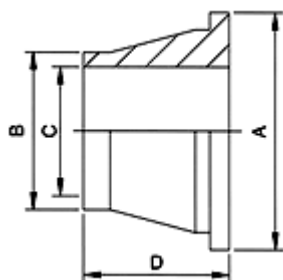
Seal For RJT Union-O-Ring



SIZE	A	B
1"	33.3	6.6
1-1/2"	46.0	6.6
2"	58.7	6.6
2-1/2"	71.4	6.6
3"	84.1	6.6
4"	109.5	6.6

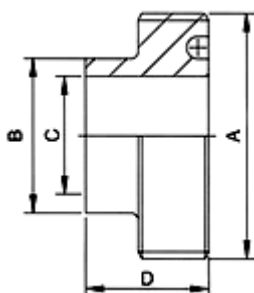
CIP Unions

CIP14 Welding Liner



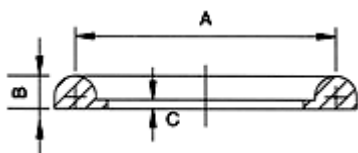
SIZE	A	B	C	D
1"	41.3	25.4	22.2	19.0
1-1/2"	54.0	38.1	34.9	19.0
2"	66.7	50.8	47.6	19.0
2-1/2"	79.4	63.5	60.3	19.0
3"	92.1	76.2	73.0	19.0
4"	117.5	101.6	97.6	19.0

CIP15 Welding Male



SIZE	A	B	C	D
1"	45.7	25.4	22.2	20.0
1-1/2"	58.4	38.1	34.9	20.0
2"	72.7	50.8	47.6	20.0
2-1/2"	85.4	63.5	60.3	20.0
3"	98.1	76.2	73.0	20.0
4"	123.5	101.6	97.6	20.0

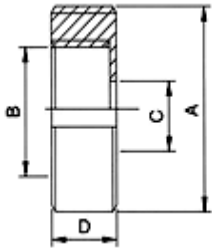
Seal For CIP Union



SIZE	A	B	C
1"	33.3	6.6	2.5
1-1/2"	46.0	6.6	2.5
2"	58.7	6.6	2.5
2-1/2"	71.4	6.6	2.5
3"	84.1	6.6	2.5
4"	109.5	6.6	2.5

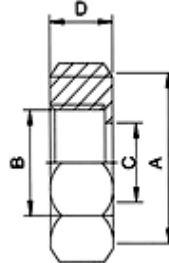
IDF Unions

IDF-13R Round Nut



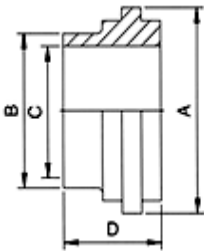
SIZE	A	B	C	D
1"	50.0	34.5	30.5	30.0
1-1/2"	65.0	48.0	43.5	30.0
2"	79.0	61.5	57.0	30.0
2-1/2"	95.0	75.0	70.7	30.0
3"	108.0	88.6	83.3	30.0
4"	135.0	115.6	112.0	35.0

IDF-13H Hex. Nut



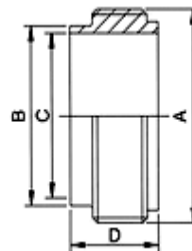
SIZE	A	B	C	D
1"	46.0	34.5	30.5	30.0
1-1/2"	60.0	48.0	43.5	30.0
2"	75.0	61.5	57.0	30.0
2-1/2"	90.0	75.0	70.7	30.0
3"	105.0	88.6	83.3	30.0
4"	133.0	115.6	112.0	35.0

IDF-14 Welding Liner



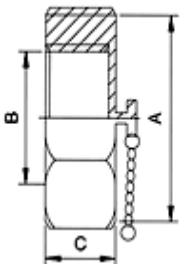
SIZE	A	B	C	D
1"	33.8	25.4	22.2	21.5
1-1/2"	47.0	38.1	34.9	21.5
2"	60.5	50.8	47.6	21.5
2-1/2"	74.0	63.5	60.3	21.5
3"	87.5	76.2	73.0	21.5
4"	120.6	101.6	97.6	30.0

IDF-15 Welding Male



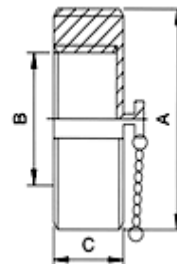
SIZE	A	B	C	D
1"	37.1	25.4	22.2	21.5
1-1/2"	50.7	38.1	34.9	21.5
2"	64.2	50.8	47.6	21.5
2-1/2"	77.7	63.5	60.3	21.5
3"	91.2	76.2	73.0	21.5
4"	118.2	101.6	97.6	30.0

IDF-13HBN Blank Nut



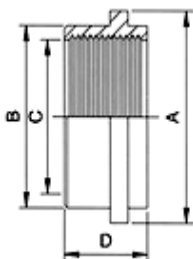
SIZE	A	B	C
1"	46.0	34.5	30.0
1-1/2"	60.0	48.0	30.0
2"	75.0	61.5	30.0
2-1/2"	90.0	75.0	30.0
3"	105.0	88.6	30.0
4"	133.0	115.6	35.0

IDF-13HRBN Round Blank Nut



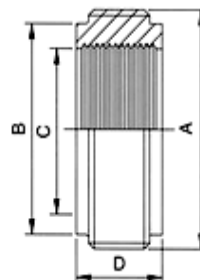
SIZE	A	B	C
1"	50.0	34.5	30.0
1-1/2"	65.0	48.0	30.0
2"	79.0	61.5	30.0
2-1/2"	95.0	75.0	30.0
3"	108.0	88.6	30.0
4"	135.0	115.6	35.0

IDF-14R Expanding Liner



SIZE	A	B	C	D
1"	33.8	29.0	25.5	20.0
1-1/2"	47.0	42.5	38.2	20.0
2"	60.5	56.0	50.9	25.0
2-1/2"	74.0	69.7	63.6	25.0
3"	87.5	82.3	76.4	30.0

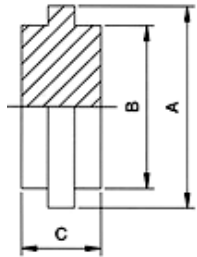
IDF-15R Expanding Male



SIZE	A	B	C	D
1"	37.1	29.0	25.5	20.0
1-1/2"	50.7	42.5	38.2	20.0
2"	64.2	56.0	50.9	25.0
2-1/2"	77.7	69.7	63.6	25.0
3"	91.2	82.3	76.4	30.0

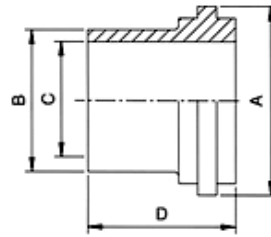
IDF Unions

IDF-16 Blank Liner



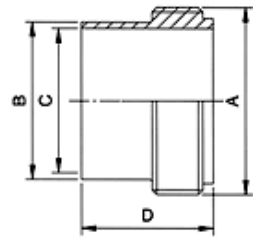
SIZE	A	B	C
1"	33.8	29.2	10.0
1-1/2"	47.0	42.7	10.0
2"	60.5	56.2	10.0
2-1/2"	74.0	69.9	10.0
3"	87.5	82.6	10.0
4"	120.6	111.1	10.0

IDF-14L Long Welding Liner



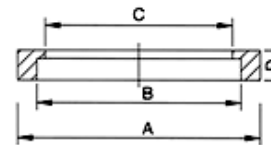
SIZE	A	B	C	D
1"	33.8	25.4	22.2	46.0
1-1/2"	47.0	38.1	34.9	46.0
2"	60.5	50.8	47.6	46.0
2-1/2"	74.0	63.5	60.3	46.0
3"	87.5	76.2	73.0	46.0
4"	120.6	101.6	97.6	49.0

IDF-15L Long Welding Male



SIZE	A	B	C	D
1"	37.1	25.4	22.2	51.0
1-1/2"	50.7	38.1	34.9	51.0
2"	64.2	50.8	47.6	51.0
2-1/2"	77.7	63.5	60.3	51.0
3"	91.2	76.2	73.0	51.0
4"	125.9	101.6	97.6	56.0

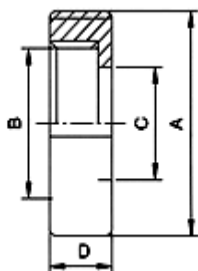
Seal For IDF Union



SIZE	A	B	C	D
1"	32.5	29.2	23.2	6.0
1-1/2"	46.0	42.7	35.9	6.0
2"	59.5	56.2	48.6	6.0
2-1/2"	73.2	69.9	61.3	6.0
3"	86.5	82.6	74.0	6.0
4"	119.0	111.0	98.6	6.0

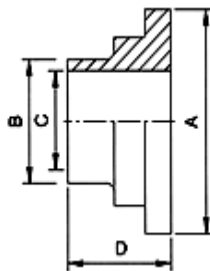
DANSK Unions

DANSK-13R(DK) Round Nut



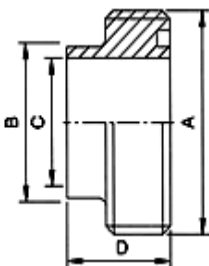
SIZE	A	B	C	D
25	57.0	40.5	35.0	20.0
38	71.0	54.5	48.5	20.0
51	86.0	68.5	62.5	22.0
63.5	103.0	84.5	76.5	24.0
76.1	115.0	96.5	88.5	25.0
101.6	147.0	126.9	117.0	28.0

DANSK-14(DK) Welding Liner



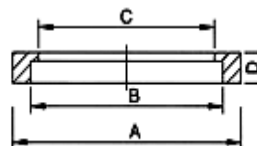
SIZE	A	B	C	D
25	39.5	25.0	22.5	11.0
38	53.5	38.0	35.5	11.0
51	67.5	51.0	48.5	11.0
63.5	83.5	63.5	60.3	12.0
76.1	95.7	76.1	72.9	12.0
101.6	124.0	101.6	97.6	12.0

DANSK-15(DK) Welding Male



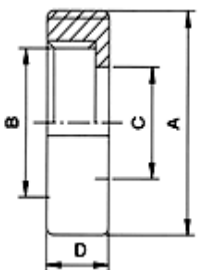
SIZE	A	B	C	D
25	43.6	25.0	22.5	18.5
38	57.6	38.0	35.5	20.0
51	71.6	51.0	48.5	20.0
63.5	87.6	63.5	60.3	24.0
76.1	99.6	76.1	72.9	24.0
101.6	129.5	101.6	97.6	24.0

Seal For DANSK(DK) Union



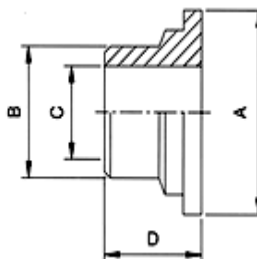
SIZE	A	B	C	D
25	32.0	22.5	25.0	5.0
38	47.0	35.5	38.0	5.0
51	59.0	48.5	51.0	5.0
63.5	74.5	60.3	63.5	5.0
76.1	88.0	72.9	76.0	5.0
101.6	112.5	97.6	102.0	5.0

DANSK-13R(SA) Round Nut



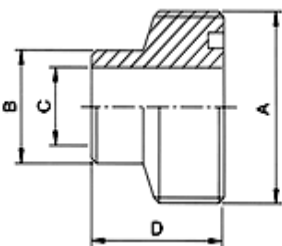
SIZE	A	B	C	D
1"	57.0	40.5	34.5	20.0
1-1/4"	65.0	48.5	42.0	20.0
1-1/2"	71.0	54.5	48.0	20.0
2"	86.0	68.5	62.0	22.0
2-1/2"	103.0	84.5	76.0	24.0
3"	115.0	96.5	88.0	25.0
4"	148.0	124.5	116.0	31.0

DANSK-14(SA) Welding Liner



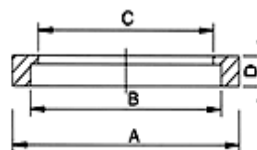
SIZE	A	B	C	D
1"	40.0	28.6	22.5	16.0
1-1/4"	48.0	35.0	29.0	16.0
1-1/2"	54.0	41.3	35.0	18.0
2"	68.0	54.0	47.5	20.0
2-1/2"	84.0	66.7	60.0	22.0
3"	96.0	79.4	72.5	24.0
4"	123.0	110.0	97.5	29.0

DANSK-15(SA) Welding Male



SIZE	A	B	C	D
1"	43.6	28.6	22.5	20.0
1-1/4"	51.6	35.0	29.0	20.0
1-1/2"	57.6	41.3	35.0	22.0
2"	71.6	54.0	47.5	24.0
2-1/2"	87.6	66.7	60.0	26.0
3"	99.6	79.4	72.5	28.0
4"	129.5	110.0	97.5	34.0

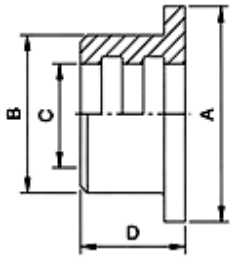
Seal For DANSK(SA) Union



SIZE	A	B	C	D
1"	32.0	22.5	25.4	5.0
1-1/4"	47.0	29.0	31.8	5.0
1-1/2"	47.0	35.0	38.1	5.0
2"	59.0	47.5	50.8	5.0
2-1/2"	74.5	60.0	63.5	5.0
3"	88.0	72.5	76.2	5.0
4"	116.0	97.5	101.6	5.0

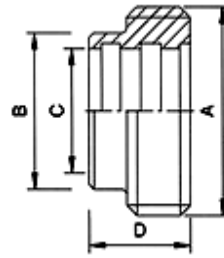
DANSK Unions

DANSK-14R Expanding Liner



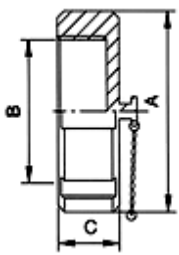
SIZE	A	B	C	D
1"	40.0	34.0	25.2	16.0
1-1/2"	54.0	47.5	38.2	18.0
2"	68.0	61.5	51.2	20.0
2-1/2"	84.0	75.5	63.7	22.0
3"	96.0	87.5	76.4	24.0
4"	123.0	115.0	102.0	29.0

DANSK-15R Expanding Male Part



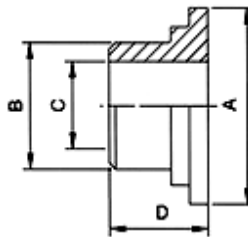
SIZE	A	B	C	D
1"	43.6	34.0	25.2	20.0
1-1/2"	57.6	47.5	38.2	22.0
2"	71.6	61.5	51.2	24.0
2-1/2"	87.6	75.5	63.7	26.0
3"	99.6	87.5	76.4	28.0
4"	129.5	115.0	102.0	34.0

DANSK-13BR Blank Nut



SIZE	A	B	C
1"	57.0	40.5	20.0
1-1/2"	71.0	54.5	20.0
2"	86.0	68.5	22.0
2-1/2"	103.0	84.5	24.0
3"	115.0	96.5	25.0
4"	147.0	126.9	28.0

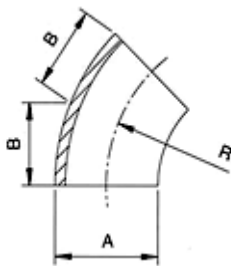
DANSK-14F Welding Liner



SIZE	A	B	C	D
1"	40.0	28.6	22.5	16.0
1-1/2"	54.0	41.3	35.0	18.0
2"	68.0	54.0	47.5	20.0
2-1/2"	84.0	66.7	60.0	22.0
3"	96.0	79.4	72.5	24.0
4"	123.0	110.0	97.5	29.0

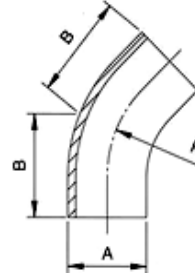
3A Butt-welding Fittings

2KW 45° Short Elbow



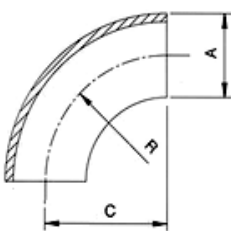
SIZE	A	B	R	T
1"	25.4	15.9	38.1	1.65
1.1/2"	38.1	23.8	57.2	1.65
2"	50.8	31.8	76.2	1.65
2.1/2"	63.5	39.7	95.3	1.65
3"	76.2	47.6	114.3	1.65
4"	101.6	63.5	152.4	2.11

2KS 45° Long Elbow



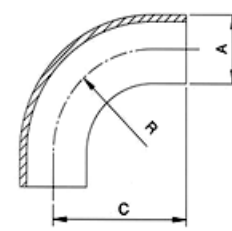
SIZE	A	B	R	T
1"	25.4	30.2	38.1	1.65
1.1/2"	38.1	40.5	57.2	1.65
2"	50.8	55.6	76.2	1.65
2.1/2"	63.5	76.2	95.3	1.65
3"	76.2	93.7	114.3	1.65
4"	101.6	127.8	152.4	2.11

2WC 90° Short Elbow



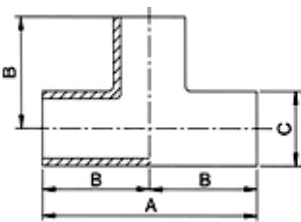
SIZE	A	C	R	T
1"	25.4	38.1	38.1	1.65
1.1/2"	38.1	57.2	57.2	1.65
2"	50.8	76.2	76.2	1.65
2.1/2"	63.5	95.3	95.3	1.65
3"	76.2	114.3	114.3	1.65
4"	101.6	152.4	152.4	2.11

2S 90° Long Elbow



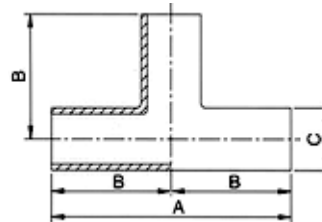
SIZE	A	C	R	T
1"	25.4	52.4	38.1	1.65
1.1/2"	38.1	74.6	57.2	1.65
2"	50.8	103.2	76.2	1.65
2.1/2"	63.5	131.8	95.3	1.65
3"	76.2	160.3	114.3	1.65
4"	101.6	211.1	152.4	2.11

7WWW Short Equal Tee



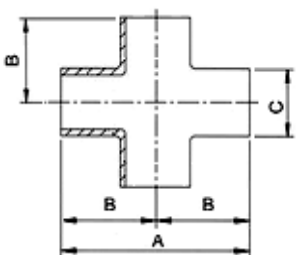
SIZE	A	B	C	T
1"	57.2	28.6	25.4	1.65
1.1/2"	84.2	42.1	38.1	1.65
2"	104.8	52.4	50.8	1.65
2.1/2"	119.0	59.5	63.5	1.65
3"	131.8	65.9	76.2	1.65
4"	174.6	87.3	101.6	2.11

7W Long Equal Tee



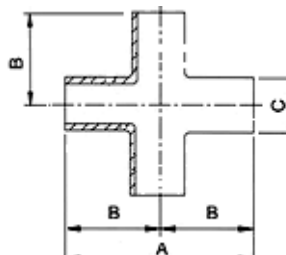
SIZE	A	B	C	T
1/2"	76.2	38.1	12.7	1.65
3/4"	69.0	34.5	19.1	1.65
1"	95.2	47.6	25.4	1.65
1.1/2"	114.4	57.2	38.1	1.65
2"	152.4	76.2	50.8	1.65
2.1/2"	152.4	76.2	63.5	1.65
3"	165.2	82.6	76.2	1.65
4"	196.8	98.4	101.6	2.11
6"	254.0	127.0	152.4	2.77

9WWW Short Equal Cross



SIZE	A	B	C	T
1"	57.2	28.6	25.4	1.65
1.1/2"	84.2	42.1	38.1	1.65
2"	104.8	52.4	50.8	1.65
2.1/2"	119.0	59.5	63.5	1.65
3"	131.8	65.9	76.2	1.65
4"	174.6	87.3	101.6	2.11

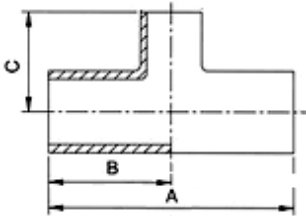
9W Long Equal Cross



SIZE	A	B	C	T
1/2"	76.2	38.1	12.70	1.65
3/4"	69.0	34.5	19.05	1.65
1"	95.2	47.6	25.40	1.65
1.1/2"	114.4	57.2	38.10	1.65
2"	152.4	76.2	50.80	1.65
2.1/2"	152.4	76.2	63.50	1.65
3"	165.2	82.6	76.20	1.65
4"	196.8	98.4	101.6	2.11
6"	254.0	127.0	152.4	2.77

3A Butt-welding Fittings

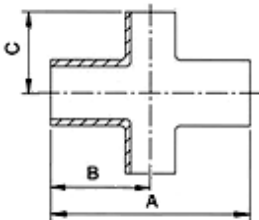
7RW Reducing Tee



SIZE	A	B	C
1" x 3/4"	114.4	57.2	50.8
1.1/2" x 3/4"	114.4	57.2	57.2
1.1/2" x 1"	114.4	57.2	54.0
2" x 1"	152.4	76.2	60.3
2" x 1.1/2"	152.4	76.2	63.5
2.1/2" x 1.1/2"	152.4	76.2	69.9
2.1/2" x 2"	152.4	76.2	82.6
3" x 1"	165.2	82.6	76.2
3" x 1.1/2"	165.2	82.6	76.2

SIZE	A	B	C
3" x 2"	165.2	82.6	88.9
3" x 2.1/2"	165.2	82.6	82.6
4" x 1.1/2"	196.8	98.4	101.6
4" x 2"	196.8	98.4	101.6
4" x 2.1/2"	196.8	98.4	95.3
4" x 3"	196.8	98.4	95.3
6" x 3"	254.0	127.0	152.4
6" x 4"	254.0	127.0	152.4

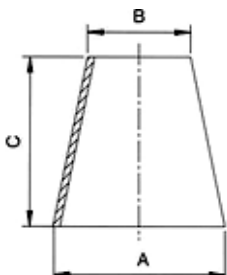
9RW Reducing Cross



SIZE	A	B	C
1" x 3/4"	114.4	57.2	50.8
1.1/2" x 3/4"	114.4	57.2	57.2
1.1/2" x 1"	114.4	57.2	54.0
2" x 1"	152.4	76.2	60.3
2" x 1.1/2"	152.4	76.2	63.5
2.1/2" x 1.1/2"	152.4	76.2	69.9
2.1/2" x 2"	152.4	76.2	82.6
3" x 1.1/2"	165.2	82.6	76.2

SIZE	A	B	C
3" x 2"	165.2	82.6	88.9
3" x 2.1/2"	165.2	82.6	82.6
4" x 2"	196.8	98.4	101.6
4" x 2.1/2"	196.8	98.4	95.3
4" x 3"	196.8	98.4	95.3
6" x 3"	254.0	127.0	152.4
6" x 4"	254.0	127.0	152.4

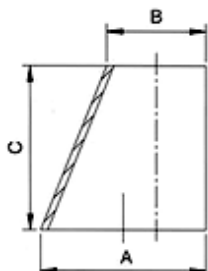
31W Concentric Reducer



SIZE	A	B	C
3/4" x 1/2"	19.0	12.7	25.4
1" x 1/2"	25.4	12.7	50.8
1" x 3/4"	25.4	19.0	25.4
1.1/2" x 1/2"	38.1	12.7	101.6
1.1/2" x 3/4"	38.1	19.0	76.2
1.1/2" x 1"	38.1	25.4	50.8
2" x 1"	50.8	25.4	101.6
2" x 1.1/2"	50.8	38.1	50.8
2.1/2" x 1.1/2"	63.5	38.1	101.6
2.1/2" x 2"	63.5	50.8	50.8
3" x 1"	76.2	25.4	203.2

SIZE	A	B	C
3" x 1.1/2"	76.2	38.1	152.4
3" x 2"	76.2	50.8	101.6
3" x 2.1/2"	76.2	63.5	50.8
4" x 1.1/2"	101.6	38.1	254.0
4" x 2"	101.6	50.8	203.2
4" x 2.1/2"	101.6	63.5	152.4
4" x 3"	101.6	76.2	101.6
6" x 2"	152.4	50.8	139.7
6" x 3"	152.4	76.2	139.7
6" x 4"	152.4	101.6	139.7

32W Eccentric Reducer

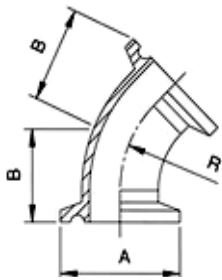


SIZE	A	B	C
3/4" x 1/2"	19.0	12.7	25.4
1" x 1/2"	25.4	12.7	50.8
1" x 3/4"	25.4	19.0	25.4
1.1/2" x 1/2"	38.1	12.7	101.6
1.1/2" x 3/4"	38.1	19.0	76.2
1.1/2" x 1"	38.1	25.4	50.8
2" x 1"	50.8	25.4	101.6
2" x 1.1/2"	50.8	38.1	50.8
2.1/2" x 1.1/2"	63.5	38.1	101.6
2.1/2" x 2"	63.5	50.8	50.8
3" x 1"	76.2	25.4	203.2

SIZE	A	B	C
3" x 1.1/2"	76.2	38.1	152.4
3" x 2"	76.2	50.8	101.6
3" x 2.1/2"	76.2	63.5	50.8
4" x 1.1/2"	101.6	38.1	254.0
4" x 2"	101.6	50.8	203.2
4" x 2.1/2"	101.6	63.5	152.4
4" x 3"	101.6	76.2	101.6
6" x 2"	152.4	50.8	139.7
6" x 3"	152.4	76.2	139.7
6" x 4"	152.4	101.6	139.7

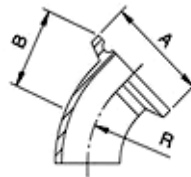
3A Clamp End Fittings

2KMP 45° Elbow Clamp End



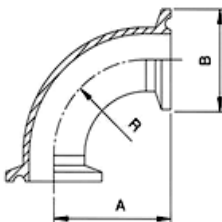
SIZE	A	B	R
1"	50.5	28.6	38.1
1.1/2"	50.5	36.5	57.2
2"	64.0	44.5	76.2
2.1/2"	77.5	52.4	95.3
3"	91.0	60.3	114.3
4"	119.0	79.4	152.4
6"	167.0	116.2	228.6

2KMW 45° Elbow One Clamp End



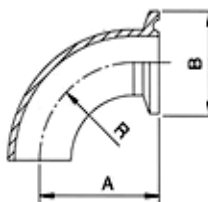
SIZE	A	B	R
1"	50.5	28.6	38.1
1.1/2"	50.5	36.5	57.2
2"	64.0	44.5	76.2
2.1/2"	77.5	52.4	95.3
3"	91.0	60.3	114.3
4"	119.0	79.4	152.4
6"	167.0	116.2	228.6

2CMP 90° Elbow Clamp End



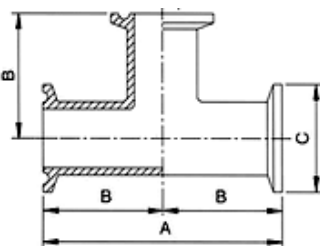
SIZE	A	B	R
1"	50.8	50.5	38.1
1.1/2"	69.9	50.5	57.2
2"	88.9	64.0	76.2
2.1/2"	108.0	77.5	95.3
3"	127.0	91.0	114.3
4"	168.3	119.0	152.4
6"	250.1	167.0	228.6

2CMW 90° Elbow One Clamp End



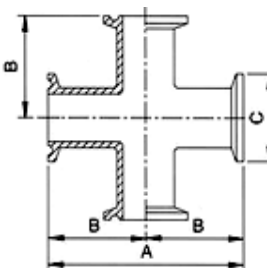
SIZE	A	C	R
1"	50.8	50.5	38.1
1.1/2"	69.9	50.5	57.2
2"	88.9	64.0	76.2
2.1/2"	108.0	77.5	95.3
3"	127.0	91.0	114.3
4"	168.3	119.0	152.4
6"	250.1	167.0	228.6

7MPS Equal Tee Clamp End



SIZE	A	B	C
1"	120.6	60.3	50.5
1.1/2"	139.8	69.9	50.5
2"	177.8	88.9	64.0
2.1/2"	177.8	88.9	77.5
3"	190.6	95.3	91.0
4"	228.6	114.3	119.0
6"	297.0	148.5	167.0

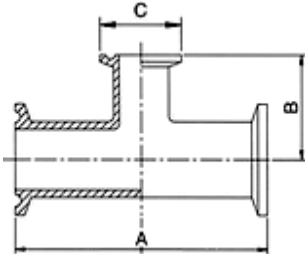
9MPS Equal Cross Clamp End



SIZE	A	B	C
1"	120.6	60.3	50.5
1.1/2"	139.8	69.9	50.5
2"	177.8	88.9	64.0
2.1/2"	177.8	88.9	77.5
3"	190.6	95.3	91.0
4"	228.6	114.3	119.0
6"	297.0	148.5	167.0

3A Clamp End Fittings

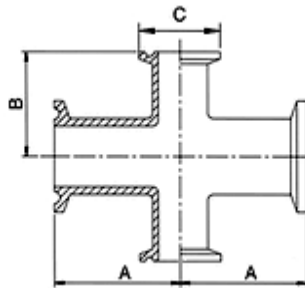
7RMPS Reducing Tee Clamp End



SIZE	A	B	C
1" x 3/4"	133.4	66.7	25.0
1.1/2" x 3/4"	146.0	73.0	25.0
1.1/2" x 1"	139.8	66.7	50.5
2" x 1"	177.8	66.7	50.5
2" x 1.1/2"	117.8	76.2	50.5
2.1/2" x 2"	177.8	95.3	64.0

SIZE	A	B	C
3" x 1.1/2"	190.6	88.9	50.5
3" x 2"	190.6	101.6	64.0
3" x 2.1/2"	190.6	95.3	77.5
4" x 2"	228.6	114.3	64.0
4" x 2.1/2"	228.6	104.8	77.5
4" x 3"	228.6	104.8	91.0

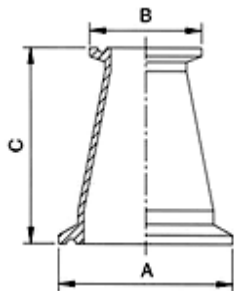
9RMPS Reducing Cross Clamp End



SIZE	A	B	C
1" x 3/4"	133.4	66.7	25.0
1.1/2" x 3/4"	146.0	73.0	25.0
1.1/2" x 1"	139.8	66.7	50.5
2" x 1"	177.8	66.7	50.5
2" x 1.1/2"	117.8	76.2	50.5
2.1/2" x 2"	177.8	95.3	64.0

SIZE	A	B	C
3" x 1.1/2"	190.6	88.9	50.5
3" x 2"	190.6	101.6	64.0
3" x 2.1/2"	190.6	95.3	77.5
4" x 2"	228.6	114.3	64.0
4" x 2.1/2"	228.6	104.8	77.5
4" x 3"	228.6	104.8	91.0

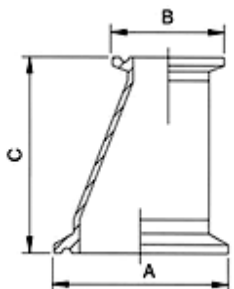
31-14MP Concentric Reducer Clamp End



SIZE	A	B	C
1" x 3/4"	50.5	25.0	50.8
1.1/2" x 3/4"	50.5	25.0	101.6
1.1/2" x 1"	50.5	50.5	76.2
2" x 1"	64.0	50.5	127.0
2" x 1.1/2"	64.0	50.5	76.2
2.1/2" x 1.1/2"	77.5	50.5	127.0
2.1/2" x 2"	77.5	64.0	76.2

SIZE	A	B	C
3" x 1.1/2"	91.0	50.5	177.8
3" x 2"	91.0	64.0	127.0
3" x 2.1/2"	91.0	77.5	76.2
4" x 2"	118.9	64.0	231.8
4" x 2.1/2"	118.9	77.5	181.0
4" x 3"	118.9	91.0	130.2
6" x 4"	166.8	118.9	189.8

32-14MP Eccentric Reducer Clamp End

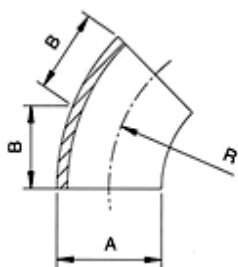


SIZE	A	B	C
1" x 3/4"	50.5	25.0	50.8
1.1/2" x 3/4"	50.5	25.0	101.6
1.1/2" x 1"	50.5	50.5	76.2
2" x 1"	64.0	50.5	127.0
2" x 1.1/2"	64.0	50.5	76.2
2.1/2" x 1.1/2"	77.5	50.5	127.0
2.1/2" x 2"	77.5	64.0	76.2

SIZE	A	B	C
3" x 1.1/2"	91.0	50.5	177.8
3" x 2"	91.0	64.0	127.0
3" x 2.1/2"	91.0	77.5	76.2
4" x 2"	118.9	64.0	231.8
4" x 2.1/2"	118.9	77.5	181.0
4" x 3"	118.9	91.0	130.2
6" x 4"	166.8	118.9	189.8

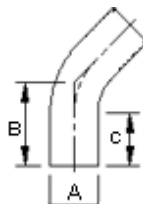
SMS Fittings

SMS 45° Short Elbow



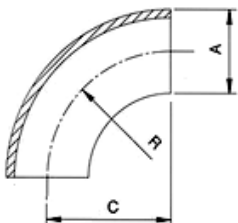
DN	A	B	Thickness	
25	25.0	15.5	1.3	1.5
38	38.0	23.6	1.3	1.5
51	51.0	31.7	1.3	1.5
63.5	63.5	39.5	1.5	1.5
76	76.1	47.3	1.6	2.0
104	104.0	63.0	2.0	2.0

SMS 45° Long Elbow



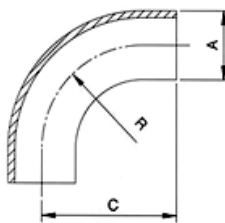
DN	A	B	C	Thickness	
25	25.0	42.5	22.4	1.3	1.5
38	38.0	56.6	35.1	1.3	1.5
51	51.0	68.7	47.8	1.3	1.5
63.5	63.5	78.5	60.5	1.5	1.5
76	76.1	85.3	72.1	1.6	2.0
104	104.0	103.0	97.6	2.0	2.0

SMS 90° Short Elbow



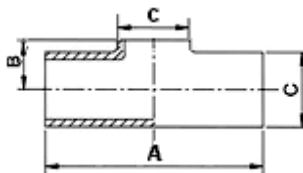
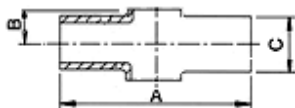
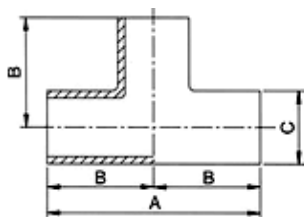
DN	A	C	Thickness	
25	25.0	37.5	1.3	1.5
38	38.0	57.0	1.3	1.5
51	51.0	76.5	1.3	1.5
63.5	63.5	95.3	1.5	1.5
76	76.1	114.2	1.6	2.0
104	104.0	152.1	2.0	2.0

SMS 90° Long Elbow



DN	A	C	Thickness	
25	25.0	52.5	1.3	1.5
38	38.0	72.0	1.3	1.5
51	51.0	91.5	1.3	1.5
63.5	63.5	113.3	1.5	1.5
76	76.1	132.2	1.6	2.0
104	104.0	176.0	2.0	2.0

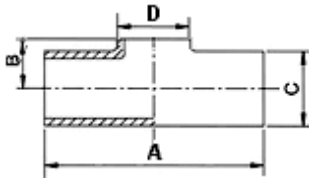
SMS Tee With Straight-End / Cross Without Straight-End / Tee Without Straight-End



DN	A	B	C	Thickness	
25	110.0	55.0	25.0	1.3	1.5
38	140.0	70.0	38.0	1.3	1.5
51	164.0	81.0	51.0	1.3	1.5
63.5	210.0	105.0	63.5	1.5	1.5
76	220.0	110.0	76.1	1.6	2.0
104	300.0	150.0	104.0	2.0	2.0

SMS Fittings

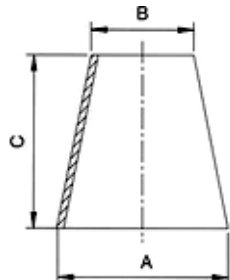
SMS Reducing Tee Without Straight-End



DN	A	B	C	D	Thickness	
38 x 25	140.0	21.0	38.0	25.0	1.3	1.5
51 x 25	164.0	29.0	51.0	25.0	1.3	1.5
51 x 38	164.0	29.0	51.0	38.0	1.3	1.5
63.5 x 25	210.0	36.0	63.5	25.0	1.5	1.5
63.5 x 38	210.0	36.0	63.5	38.0	1.5	1.5
63.5 x 51	210.0	36.0	63.5	51.0	1.5	1.5
76.1 x 25	220.0	44.0	76.1	25.0	1.6	2.0
76.1 x 38	220.0	44.0	76.1	38.0	1.6	2.0

DN	A	B	C	D	Thickness	
76.1 x 51	220.0	44.0	76.1	51.0	1.6	2.0
76.1 x 63.5	220.0	44.0	76.1	63.5	1.6	2.0
104 x 25	300.0	58.0	104.0	25.0	2.0	2.0
104 x 38	300.0	58.0	104.0	38.0	2.0	2.0
104 x 51	300.0	58.0	104.0	51.0	2.0	2.0
104 x 63.5	300.0	58.0	104.0	63.5	2.0	2.0
104 x 76.1	300.0	58.0	104.0	76.1	2.0	2.0

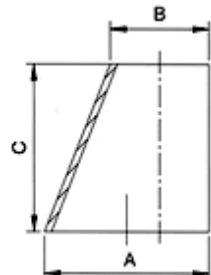
SMS Concentric Reducer



SIZE	A	B	C	Thickness	
38 x 25	38.0	25.0	39.0	46.0	1.3 1.5
51 x 25	51.0	25.0	57.0	68.0	1.3 1.5
51 x 38	51.0	38.0	39.0	47.0	1.3 1.5
63.5 x 25	63.5	25.0	74.0	92.0	1.3 1.5
63.5 x 38	63.5	38.0	57.0	70.0	1.3 1.5
63.5 x 51	63.5	51.0	39.0	44.0	1.3 1.5
76.1 x 25	76.1	25.0	92.0		1.3 1.5

SIZE	A	B	C	Thickness	
76.1 x 38	76.1	38.0	74.0	92.0	1.3 1.5
76.1 x 51	76.1	51.0	57.0	68.0	1.3 1.5
76.1 x 63.5	76.1	63.5	39.0	47.0	1.5 1.5
104 x 51	104.0	51.0	95.0	117.0	1.3 1.5
104 x 63.5	104.0	63.5	78.0	94.0	1.5 1.5
104 x 76.1	104.0	76.1	60.0	74.0	1.6 2.0

SMS Eccentric Reducer

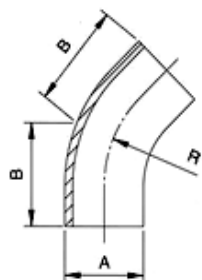


SIZE	A	B	C	Thickness	
38 x 25	38.0	25.0	39.0	46.0	1.3 1.5
51 x 25	51.0	25.0	57.0	68.0	1.3 1.5
51 x 38	51.0	38.0	39.0	47.0	1.3 1.5
63.5 x 25	63.5	25.0	74.0	92.0	1.3 1.5
63.5 x 38	63.5	38.0	57.0	70.0	1.3 1.5
63.5 x 51	63.5	51.0	39.0	44.0	1.3 1.5
76.1 x 25	76.1	25.0	92.0		1.3 1.5

SIZE	A	B	C	Thickness	
76.1 x 38	76.1	38.0	74.0	92.0	1.3 1.5
76.1 x 51	76.1	51.0	57.0	68.0	1.3 1.5
76.1 x 63.5	76.1	63.5	39.0	47.0	1.5 1.5
104 x 51	104.0	51.0	95.0	117.0	1.3 1.5
104 x 63.5	104.0	63.5	78.0	94.0	1.5 1.5
104 x 76.1	104.0	76.1	60.0	74.0	1.6 2.0

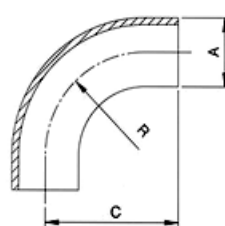
DIN Fittings

DIN 45° Long Elbow



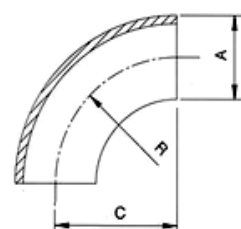
SIZE	A	B	R	T
DN25	28.0	20.0	20.0	1.5
DN32	34.0	23.0	23.0	1.5
DN40	40.0	20.0	20.0	1.5
DN50	52.0	27.0	27.0	1.5
DN65	70.0	30.0	30.0	2.0
DN80	85.0	33.0	33.0	2.0
DN100	104.0	40.0	40.0	2.0

DIN 90° Long Elbow



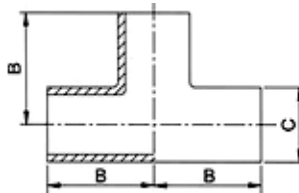
SIZE	A	C	R	T
DN25	28.0	65.0	50.0	1.5
DN32	34.0	73.0	55.0	1.5
DN40	40.0	80.0	60.0	1.5
DN50	52.0	92.0	70.0	1.5
DN65	70.0	105.0	80.0	2.0
DN80	85.0	119.0	90.0	2.0
DN100	101.6	175.0	133.0	2.0
DN100	104.0	140.0	100.0	2.0

DIN 90° Short Elbow



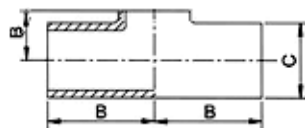
SIZE	A	C	R	T
DN25	28.0	50.0	50.0	1.5
DN32	34.0	55.0	55.0	1.5
DN40	40.0	60.0	60.0	1.5
DN50	52.0	70.0	70.0	1.5
DN65	70.0	80.0	80.0	2.0
DN80	85.0	90.0	90.0	2.0
DN100	101.6	133.0	133.0	2.0
DN100	104.0	100.0	100.0	2.0

DIN Equal Tee



SIZE	B	C	T
DN20	47.0	22.0	1.5
DN25	50.0	28.0	1.5
DN32	55.0	34.0	1.5
DN40	60.0	40.0	1.5
DN50	70.0	52.0	1.5
DN65	80.0	70.0	2.0
DN80	90.0	85.0	2.0
DN100	150.0	101.6	2.0
DN100	100.0	104.0	2.0

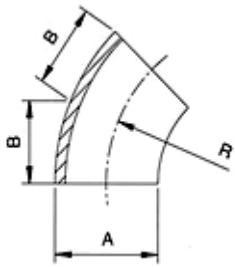
DIN Pull Tee



SIZE	B	C	T
DN20	47.0	22.0	1.5
DN25	50.0	28.0	1.5
DN32	55.0	34.0	1.5
DN40	60.0	40.0	1.5
DN50	70.0	52.0	1.5
DN65	80.0	70.0	2.0
DN80	90.0	85.0	2.0
DN100	150.0	101.6	2.0
DN100	100.0	104.0	2.0

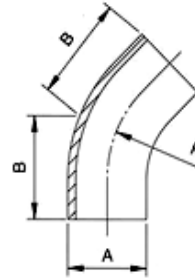
BS Fittings

BS 45° Short Elbow



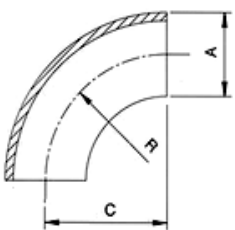
SIZE	A	B	Thickness
1.0"	25.4	15.8	1.7
1.5"	38.1	23.8	1.7
2.0"	50.8	31.8	1.7
2.5"	63.5	39.6	1.7
3.0"	76.2	47.6	1.7
4.0"	101.6	63.5	2.1

BS 45° Long Elbow



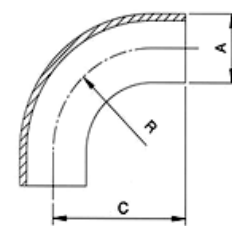
SIZE	A	B	Thickness
1.0"	25.4	30.2	1.7
1.5"	38.1	41.3	1.7
2.0"	50.8	58.7	1.7
2.5"	63.5	76.2	1.7
3.0"	76.2	93.7	1.7
4.0"	101.6	122.2	2.1

BS 90° Short Elbow



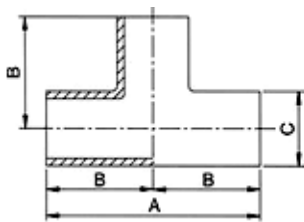
SIZE	A	C	Thickness
1.0"	25.4	43.5	1.7
1.5"	38.1	63.5	1.7
2.0"	50.8	88.5	1.7
2.5"	63.5	113.5	1.7
3.0"	76.2	133.5	1.7
4.0"	101.6	173.5	2.1

BS 90° Long Elbow



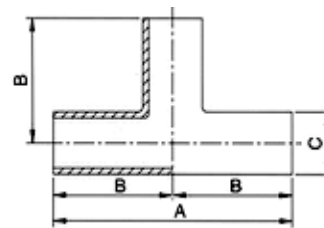
SIZE	A	C	Thickness
1.0"	25.4	65.0	1.7
1.5"	38.1	85.0	1.7
2.0"	50.8	110.0	1.7
2.5"	63.5	135.0	1.7
3.0"	76.2	155.0	1.7
4.0"	101.6	195.0	2.1

BS Welding Short Tee



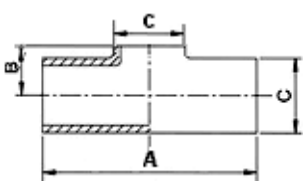
SIZE	A	B	C	T
1.0"	87.0	43.5	25.4	1.7
1.5"	127.0	63.5	38.1	1.7
2.0"	177.0	88.5	50.8	1.7
2.5"	227.0	113.5	63.5	1.7
3.0"	267.0	133.5	76.2	1.7
4.0"	347.0	173.5	101.6	2.1

BS Welding Long Tee



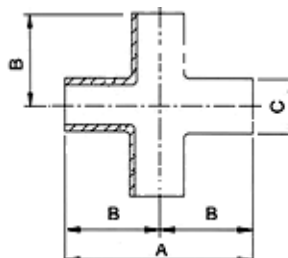
SIZE	A	B	C	T
1.0"	130.0	65.0	25.4	1.7
1.5"	170.0	85.0	38.1	1.7
2.0"	220.0	110.0	50.8	1.7
2.5"	270.0	135.0	63.5	1.7
3.0"	310.0	155.0	76.2	1.7
4.0"	390.0	195.0	101.6	2.1

BS Tee Without Straight-End



SIZE	A	B	C	T
1.0"	87.0	14.2	25.4	1.7
1.5"	127.0	21.6	38.1	1.7
2.0"	177.0	29.1	50.8	1.7
2.5"	227.0	35.3	63.5	1.7
3.0"	267.0	41.4	76.2	1.7
4.0"	347.0	54.7	101.6	2.1

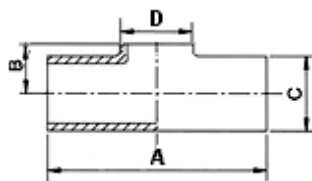
BS Long Cross



SIZE	A	B	C	T
1.0"	130.0	65.0	25.4	1.7
1.5"	170.0	85.0	38.1	1.7
2.0"	220.0	110.0	50.8	1.7
2.5"	270.0	135.0	63.5	1.7
3.0"	310.0	155.0	76.2	1.7
4.0"	390.0	195.0	101.6	2.1

BS Fittings

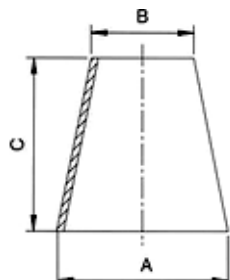
BS Reducing Tee Without Straight-End



SIZE	A	B	C	D	T
1.5" x 1.0"	127.0	22.0	38.1	25.4	1.7
2.0" x 1.0"	177.0	29.0	50.8	25.4	1.7
2.0" x 1.5"	177.0	29.0	50.8	38.1	1.7
2.5" x 1.0"	227.0	35.0	63.5	25.4	1.7
2.5" x 1.5"	227.0	35.0	63.5	38.1	1.7
2.5" x 2.0"	227.0	35.0	63.5	50.8	1.7
3.0" x 1.0"	264.0	41.0	76.2	25.4	1.7

SIZE	A	B	C	D	T
3.0" x 1.5"	258.0	41.0	76.2	38.1	1.7
3.0" x 2.0"	244.0	41.0	76.2	50.8	1.7
3.0" x 2.5"	244.0	41.0	76.2	63.5	1.7
4.0" x 2.0"	347.0	55.0	101.6	50.8	2.1
4.0" x 2.5"	347.0	55.0	101.6	63.5	2.1
4.0" x 3.0"	347.0	55.0	101.6	76.2	2.1

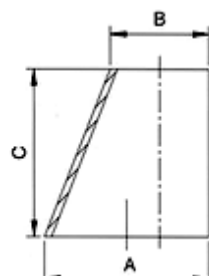
BS Concentric Reducer



SIZE	A	B	C	T
1.5" x 1.0"	38.1	25.4	29.0	1.7
2.0" x 1.0"	50.8	25.4	53.0	1.7
2.0" x 1.5"	50.8	38.1	41.0	1.7
2.5" x 1.0"	63.5	25.4	82.0	1.7
2.5" x 1.5"	63.5	38.1	64.0	1.7
2.5" x 2.0"	63.5	50.8	40.0	1.7
3.0" x 1.0"	76.2	25.4	110.0	1.7

SIZE	A	B	C	T
3.0" x 1.5"	76.2	38.1	81.0	1.7
3.0" x 2.0"	76.2	50.8	55.0	1.7
3.0" x 2.5"	76.2	63.5	41.0	1.7
4.0" x 1.5"	101.6	38.1	135.0	2.1
4.0" x 2.0"	101.6	50.8	106.0	2.1
4.0" x 2.5"	101.6	63.5	76.0	2.1
4.0" x 3.0"	101.6	76.2	53.0	2.1

BS Eccentric Reducer



SIZE	A	B	C	T
1.5" x 1.0"	38.1	25.4	35.0	1.7
2.0" x 1.0"	50.8	25.4	54.0	1.7
2.0" x 1.5"	50.8	38.1	36.0	1.7
2.5" x 1.0"	63.5	25.4	76.0	1.7
2.5" x 1.5"	63.5	38.1	66.0	1.7
2.5" x 2.0"	63.5	50.8	35.0	1.7
3.0" x 1.0"	76.2	25.4	112.0	1.7

SIZE	A	B	C	T
3.0" x 1.5"	76.2	38.1	78.0	1.7
3.0" x 2.0"	76.2	50.8	66.0	1.7
3.0" x 2.5"	76.2	63.5	44.0	1.7
4.0" x 1.5"	101.6	38.1	122.0	2.1
4.0" x 2.0"	101.6	50.8	97.0	2.1
4.0" x 2.5"	101.6	63.5	73.0	2.1
4.0" x 3.0"	101.6	76.2	77.0	2.1

Stainless steel Cam & Groove Coupling



Polypropylene Cam & Groove Coupling



Aluminum Cam & Groove Couplings



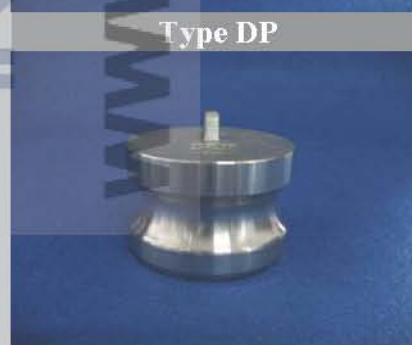
Nylon Cam & Groove Coupling



Brass Cam & Groove Couplings



Cam & Groove Couplers are an excellent choice for applications in low pressure fluid handling. These couplings mate quickly and conveniently by inserting the grooved coupling into the cam coupling and simply closing the cam arms. Safety pins prevent the cam arms from accidental disconnection during use. Available in a broad range of sizes and styles, Cam & Groove Couplings are popular in a wide array of industries



How to Order:

- | | |
|--------------------|--|
| 1. TYPE | Type A, Type B, Type C, Type D, Type E, Type F, Type DC, Type DP |
| 2. SIZE | 1/2", 3/4", 1", 1-1/4", 1-1/2", 2", 2-1/2", 3", 4", 5", 6" |
| 3. THREAD | BSP, BSPT, NPT, DIN259/2999 |
| 4. HANDLE MATERIAL | Stainless Steel |
| 5. Body Material | Stainless Steel 316, Stainless Steel 304 |

Detail technique data will be confirmed by samples

Type A



Type B



Type C



Type D



Type E



Type F



Type DC



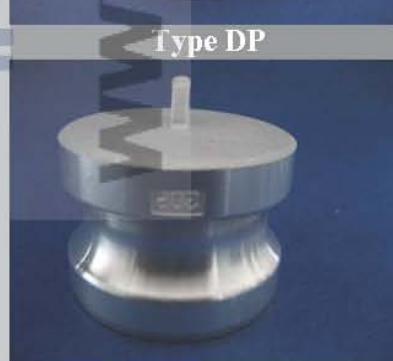
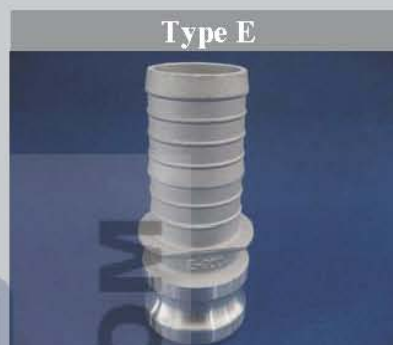
Type DP



How to Order:

1.TYPE	Type A,Type B,Type C,Type D,Type E,Type F,Type DC,Type DP
2.SIZE	1/2",3/4",1/2",1-1/4",1-1/2",2",2-1/2",3",4",5",6"
3.THREAD	BSP,BSPT,NPT,DIN259/2999
4.HANDLE MATERIAL	Stainless Steel,Brass

Detail technique data will be confirmed by samples



How to Order:

1. TYPE
2. SIZE
3. THREAD
4. HANDLE MATERIAL

Type A, Type B, Type C, Type D, Type E, Type F, Type DC, Type DP
 1/2", 3/4", 1/2", 1-1/4", 1-1/2", 2", 2-1/2", 3", 4", 5", 6", 8", 10", 12"
 BSP, BSPT, NPT, DIN259/2999
 Aluminum, Stainless Steel, Brass

Detail technique data will be confirmed by samples

Type A



Type B



Type C



Type D



Type E



Type F



Type DC



Type DP



How to Order:

1. TYPE	Type A, Type B, Type C, Type D, Type E, Type F, Type DC, Type DP
2. SIZE	1/2", 3/4", 1", 1-1/4", 1-1/2", 2", 2-1/2", 3", 4"
3. THREAD	BSP, BSPT, NPT, DIN259/2999
4. HANDLE MATERIAL	Stainless Steel, POM(plastic)

Detail technique data will be confirmed by samples



How to Order:

1. TYPE
2. SIZE
3. THREAD
4. HANDLE MATERIAL

Type A, Type B, Type C, Type D, Type E, Type F, Type DC, Type I
 1/2", 3/4", 1/2", 1-1/4", 1-1/2", 2", 2-1/2", 3", 4"
 BSP, BSPT, NPT, DIN259/2999
 Stainless Steel, POM(plastic)

Detail technique data will be confirmed by samples

Fire Sleeve
Red Oxide Silicone Coated
Glass Fibre Sleevings.

Therm It Fire Sleeve is manufactured from 'E' glass fibre yarn knitted to form a sleeve and coated with high-grade silicone elastomer rubber.



What's it used for?

Therm It Fire Sleeve is a very flexible sleeving designed to protect wires, cables, and hoses from high ambient temperatures. It will offer continuous protection at an operating temperature of 250 deg. C and can withstand a molten metal splash at 1200 deg. C

Technical information.

Colour: Red Oxide

Wall thickness: 4mm +/- 0.5mm

Average Dielectric Strength: 30Kv +

Standard format.

Wide
1000 mm

length
30 M coils

